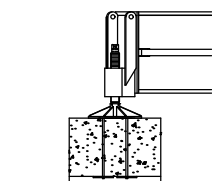
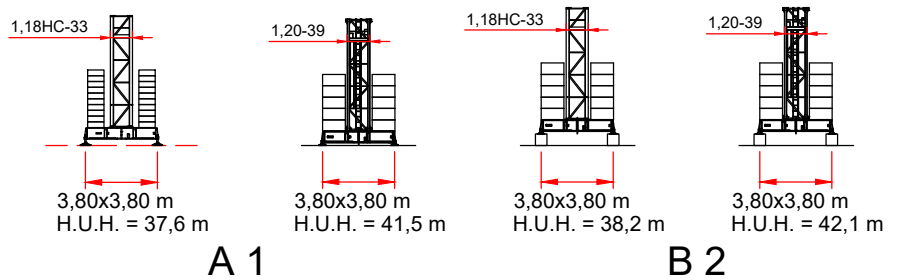
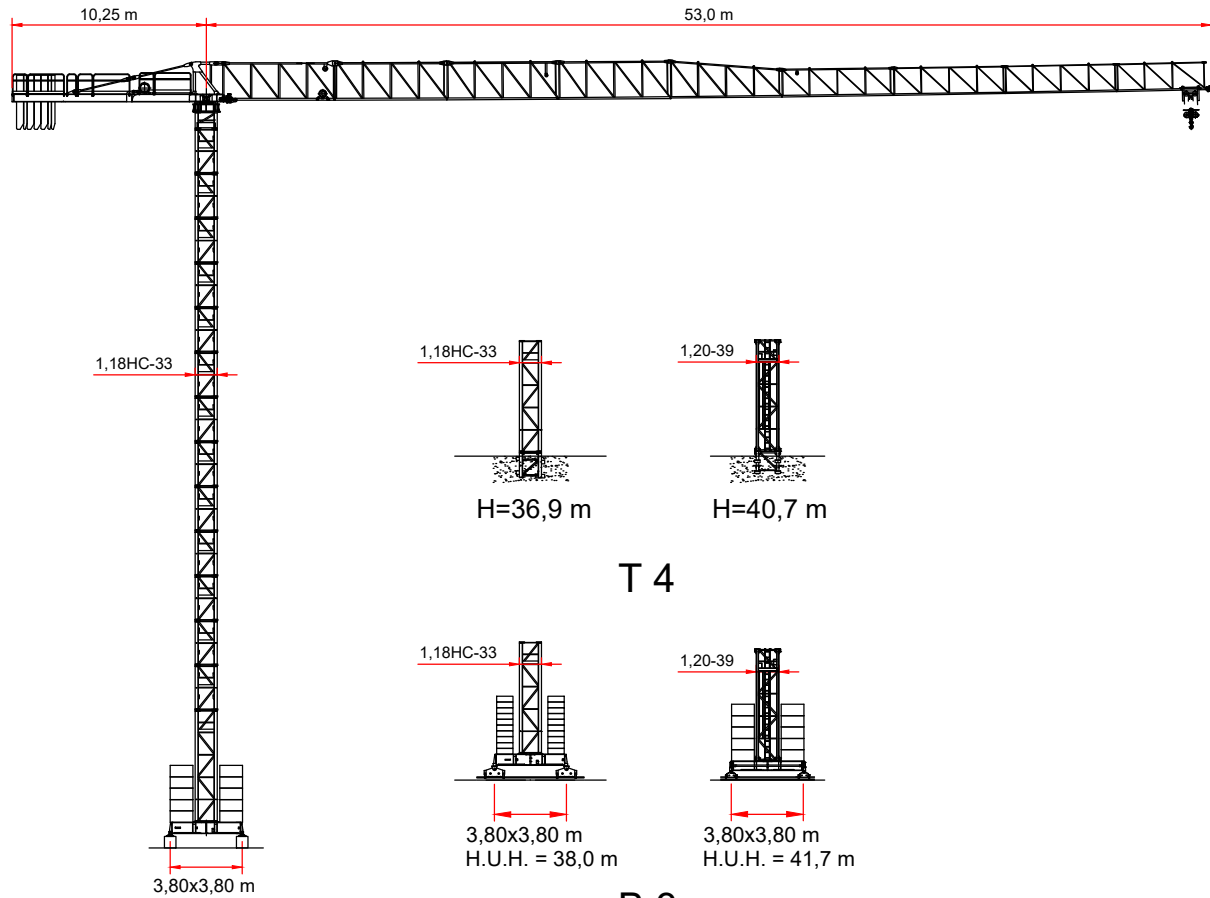
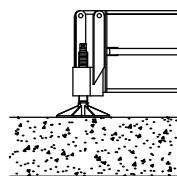


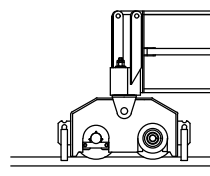
Gergisiz Kule Vinç - Gru senza cuspidi - Flat Top Crane - Grues sans poinçon - Kran ohne turmspitze



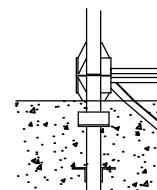
B1



A1

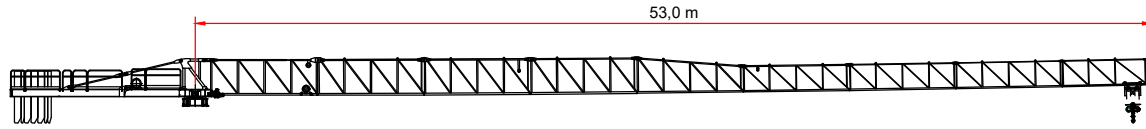


B3

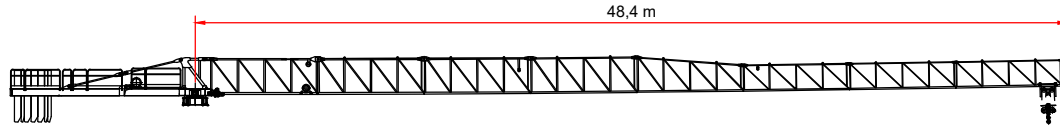


T4

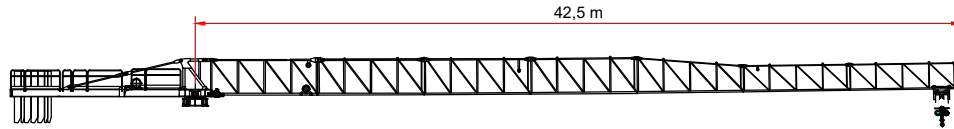
YÜK DİYAGRAMI - DIAGRAMMI DI PORTATA - LOAD CHART - DIAGRAMME DE CHARGE UTILE - BELASTBERKEITSDIAGRAMM



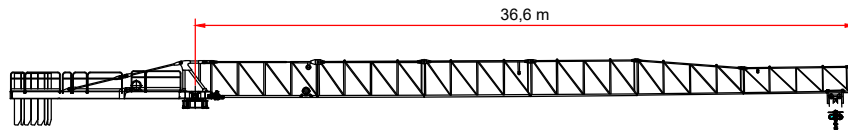
	JIB (m)	12.00	16.00	20.00	23.00	29.00	35.00	41.00	47.00	52.00
3 t → 24.6 m	t	3.0	3.0	3.0	3.0	2.47	1.99	1.64	1.38	1.25
6 t → 12.7 m	t	6.0	4.68	3.65	3.12	2.37	1.89	1.54	1.28	1.15



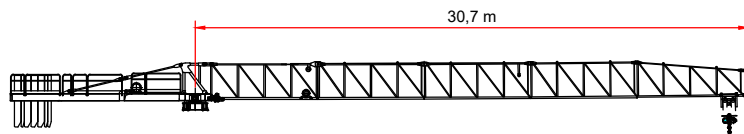
	JIB (m)	12.00	16.00	20.00	23.00	29.00	35.00	41.00	47.00
3 t → 25.2 m	t	3.0	3.0	3.0	3.0	2.53	2.02	1.66	1.40
6 t → 13.5 m	t	6.0	4.94	3.80	3.22	2.43	1.92	1.56	1.30



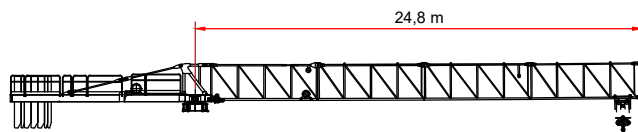
	JIB (m)	12.00	16.00	20.00	23.00	29.00	35.00	41.00
3 t → 25.6 m	t	3.0	3.0	3.0	3.0	2.58	2.06	1.70
6 t → 13.8 m	t	6.0	5.03	3.88	3.29	2.48	1.96	1.60



	JIB (m)	12.00	16.00	20.00	23.00	29.00	35.00
3 t → 26.9 m	t	3.0	3.0	3.0	3.0	2.75	2.20
6 t → 14.5 m	t	6.0	5.34	4.12	3.49	2.65	2.10



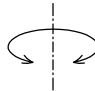
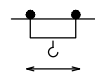
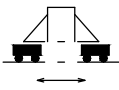
	JIB (m)	12.00	16.00	20.00	23.00	29.00
3 t → 27.2 m	t	3.0	3.0	3.0	3.0	2.9
6 t → 14.9 m	t	6.0	5.40	4.19	3.58	2.8

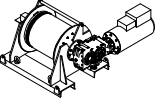




	JIB (m)	12.00	16.00	20.00	23.00
3 t → 23.0 m	t	3.0	3.0	3.0	3.00
6 t → 15.7 m	t	6.0	5.48	4.24	3.60

TEMEL ÖZELLİKLER - CARATTERISTICHE AZIONAMENTI PRINCIPALI - MAIN DRIVE FEATURES

CARACTÉRISTIQUE ACTIONNEMENTS PRINCIPAUX - HAUPTBEDIENUNGSEIGENSCHAFTEN

		Hız - Velocità - Speed - Vitesse - Geschwindigkeit	Güç - Potenza - Power - Puissance - Leistung
Dönüş Rotazione Slewing Orientation Schwenken		0 → 0,67 r.p.m.	1 x 65 Nm
Şaryo Carrello Trolley Chariot Katzfahren		12 / 35 / 70 m/min.	5,5 KW
Yürüyüş Traslazione Rail Translation Kranfahren		16 m/min.	2 x 4 kW

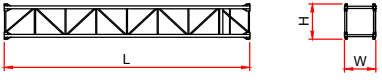



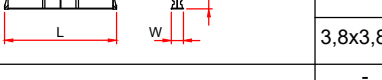
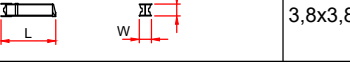
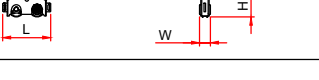
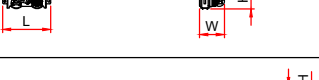


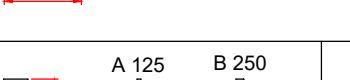




Tip Type Tipo Type Type		Güç Power - Potenza Puissance - Leistung		Halat Rope - Fune Cable - Seil	
		hp - CV PS - ch	kW	m	
25-VF0635		25	18.5	250	
Katman Layer - Strati Couches - Lagen		N. 6			
Vites - Step - Marcia Vitesse - Gang		kg	m/min	kg	m/min
1		3000	8,0	6000	4,0
2		3000	40,22	6000	20,11
3		2000	64,0	4000	32,0
4		1200	88,0	2400	44,0
Maximum Yükseklik - Maximum height - Massima altezza - Hauteur maximale - Maximale Höhe		110 m		55 m	

TOPLAM GÜÇ TOTAL INSTALLED POWER FORZA MOTRICE TOTALE PUISSANCE TOTALE DES MOTEURS GESAMT-MOTORENLEISTUNG	31,5 kW
---	---------

Sevkiyat Listesi - Distinta di Carico - Packing List - Liste de Colisage - Kolli-Liste

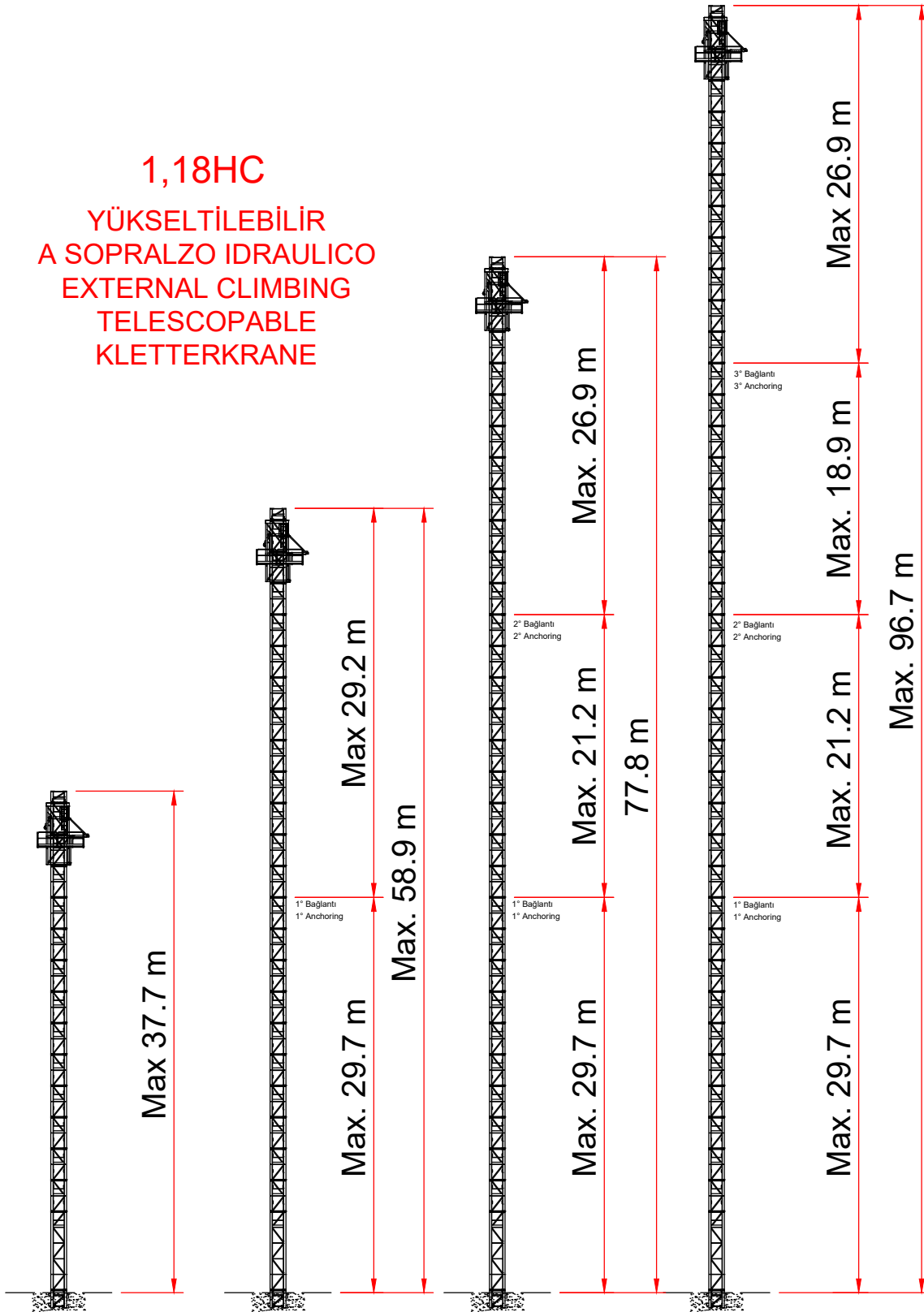
No. Pos. Item	Parça Pezzi Pieces	Açıklama Denominazione Description	Çizim Schizzo Sketch	Boyutlar Dimensions			Ağırlık Weight (Kg)		
				L	W	H	Unit.	Total.	
1		Bomlar Elemento di freccia Jib element Elément de flèche Ausleger	N°1		6.135	1.280	2.060	1410	1500
			N°2		6.155	1.150	2.060	700	700
			N°3		6.155	1.150	2.060	590	590
			N°4		6.155	1.150	2.060	490	490
			N°5		6.060	1.150	2.030	420	420
			N°6		6.060	1.150	1.500	340	340
			N°7		6.040	1.150	1.500	300	300
			N°8		6.005	1.150	1.500	265	265
			N°9		4.785	1.150	1.470	220	220
2	Bom - Freccia - Jib Flèche - Ausleger		52 m	46.4	1.280	2.200	3325	3325	
			47 m	41.7	1.280	2.200	3105	3105	
			41 m	35.8	1.280	2.200	2840	2840	
			35 m	29.9	1.280	2.200	2540	2540	
			29 m	24.0	1.280	2.200	2200	2200	
			23 m	18.1	1.280	2.200	1780	1780	
3A	1	Kule, Cuspide, A frame, Pointe, Turmspitze			1.65	1.21	1.73	695	695
3B	1	Kuyruk tablası, kanca motoru elektrik panosu vs. Controfreccia girevole, argano di sollev. quadro elettrico etc. Counterjib-turtable, hoisting winch, electrical box etc.			5.085	1.95	2.06	5155	5155
3A + 3B	1	Contreflèche tournante, treuil de levage, armoire électrique. Gegenausleger, Hubwinde, Drehwerk Schaltschrank.			5.085	1.7	2.65	5850	5850
4	1	Kuyruk. Elemento controfreccia esterno. External counterjib. Contreflèche extérieure. Externes gegenausleger.			6.715	1.435	1.470	1700	1700
1		Kabin Cabina e ballatoio Cabin with access platform Cabine avec ensemble mat cabine Kabine			3.100	2.100	1.950	650	650
5	-	1,18			11.8	1.18	1.18	3350	3350
6	-	Mast Elemento di torre Tower element Elément de mature Turmstück			5.9	1.18	1.18	1850	1850
7	-				2.36	1.18	1.18	870	870
8	-	Ankraj Tronchetto di fondazione Expendable foundation element Elément a sceller Fundamentanker			1.350	1.49	1.49	790	790

Sevkiyat Listesi - Distinta di Carico - Packing List - Liste de Colisage - Kolli-Liste

No. Pos. Item	Parça Pezzi Pieces	Açıklama Denominazione Description	Çizim Schizzo Sketch	Boyutlar Dimensions			Ağırlık Weight (Kg)		
				L	W	H	Unit.	Total.	
5	-	1,20HC		11.8	1.2	1.38	3050	3050	
6	-	Mast Elemento di torre Tower element Elément de mature Turmstück		5.9	1.2	1.38	1620	1620	
7	-			2.95	1.2	1.38	810	810	
8	-	Ankraj Tronchetto di fondazione Expendable foundation element Elément a sceller Fundamentanker		1.090	1.38	1.38	455	455	
9	1	ŞASE UZUN KOL TRAVE DI BASE PRINCIPALE BASE MAIN BEAM POUTRE DE CHASSIS DE BASE		-	-	-	-	-	
				3,8x3,8mt	5,535	0,710	0,760	1460	1460
10	1	ŞASE KISA KOL SEMI-TRAVE DI BASE HALF BASE BEAM SEMIPOUTRE DE CHASSIS DE BASE		-	-	-	-	-	
				3,8x3,8mt	2,620	0,590	0,770	940	1880
11	2	YÜRÜYÜŞ TAKIMI BILANCINO DI TRASLAZ. FOLLE DRIVEN BOIGE BOGGIE FOU		1.16	0.25	0.503	455	960	
12	2	YÜRÜYÜŞ TAKIMI - MOTORLU BILANCINO DI TRASLAZ. MOTORIZ. BOGGIE MOTORISEE DRIVING BOIGE		1.16	0.59	0.503	680	1360	
13	20	Şase taşı (Z500) Blocco di zavorra Base ballast block Lest de base		3.800	1.200	0.480	5000	60000	
		Grundballastblöcken (Z250)		3.800	1.200	0.240	2500	5000	
14	4	Destek bloğu Blocco di appoggio Concrete pad Sabot en béton Betonfuss (BA 2)		3.000	0.600	0.600	2465	9860	
15	3	Kuyruk taşı Blocchi di contrappeso Counterweight block Contre-poids		A 125	3.000	0.185	1.200	1250	3750
	4	Gegengewichtsblocke		B 250	3.000	0.370	1.200	2500	10000
4 x 40' H.U.H =42mt		Highcube	3 x H.U.H =42mt		L:13.60 W:2.45 H:3.00/2.70				

1,18HC

YÜKSELTİLEBİLİR
A SOPRALZO IDRAULICO
EXTERNAL CLIMBING
TELESCOPABLE
KLETTERKRANE



Farklı Dizilimler Mümkündür
Altre Configurazioni Disponibili
Other Configuration Available
Autres configurations Disponibles
Andere Konfigurationen Verfügbar

MERKEZ/CENTER:

Merkez Mahallesi Zafer Caddesi B Blok No:12/2/1 GÜMÜŞOVA
(Gümüşova OSB) DÜZCE

İletişim / Contact

Tel : +90 380 533 7414 / info@tgmkulevinc.com.tr
Fax : +90 380 553 7415
Gsm : +90 536 064 4639 / teklif@tgmkulevinc.com.tr
Service : +90 533 095 4455 / servis@tgmkulevinc.com.tr
International Trade : +90 530 914 1158 / aslan@tgmkulevinc.com.tr



Özellikler ve teknik veriler katalogdakinden farklılık gösterebilir.

Dati illustrativi non impegnativi con riserva di modifica senza preavviso

Specifications and data not binding subject to modification without notice

Angaben und Beschreib ungunverbindlich andreungen vorbehalten ohne weitere mitteilung

Données techniques seulement indicatives modifications réservées sans préavis.