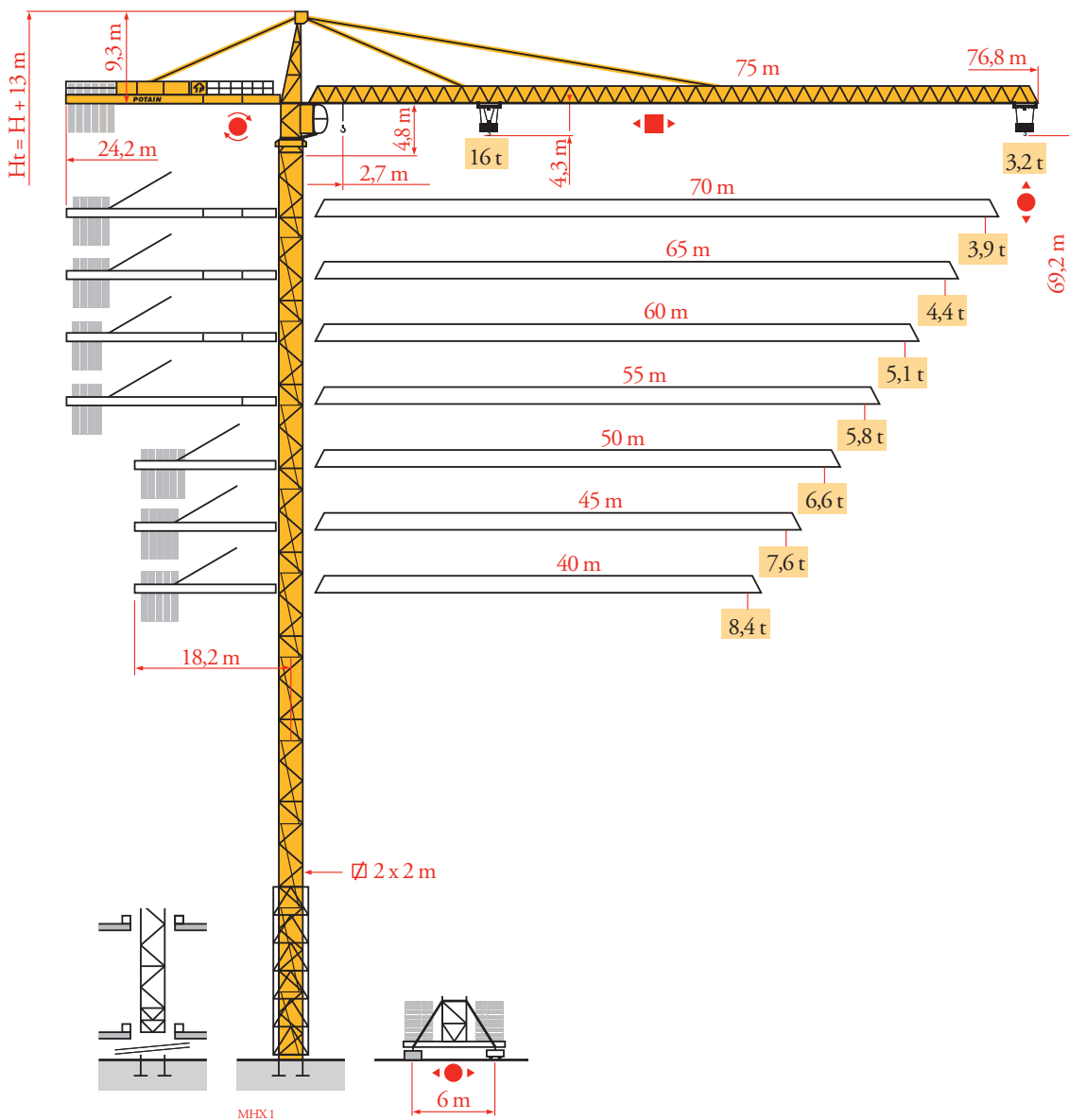


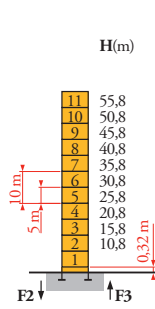
# Potain MD 365B L16



Mat / Réactions  
 Maste / Eckdrücke  
 Masts / Reactions  
 Mástil / Reacciones  
 Torre / Reazioni  
 Tramo / Reacções  
 Композиции башни /  
 Реакции

MHX1

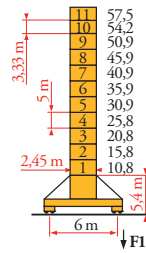
2 m  
 40 m ⇒ 75 m



P 62 A

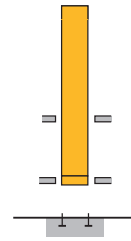
F2	• 184 t
	■ 214 t
F3	• 119 t
	■ 157 t
	▲ 90 t

H(m)



V 60 A

F1	• 116 t
	■ 114 t
	▲ 101 t

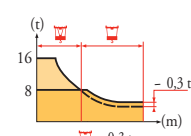
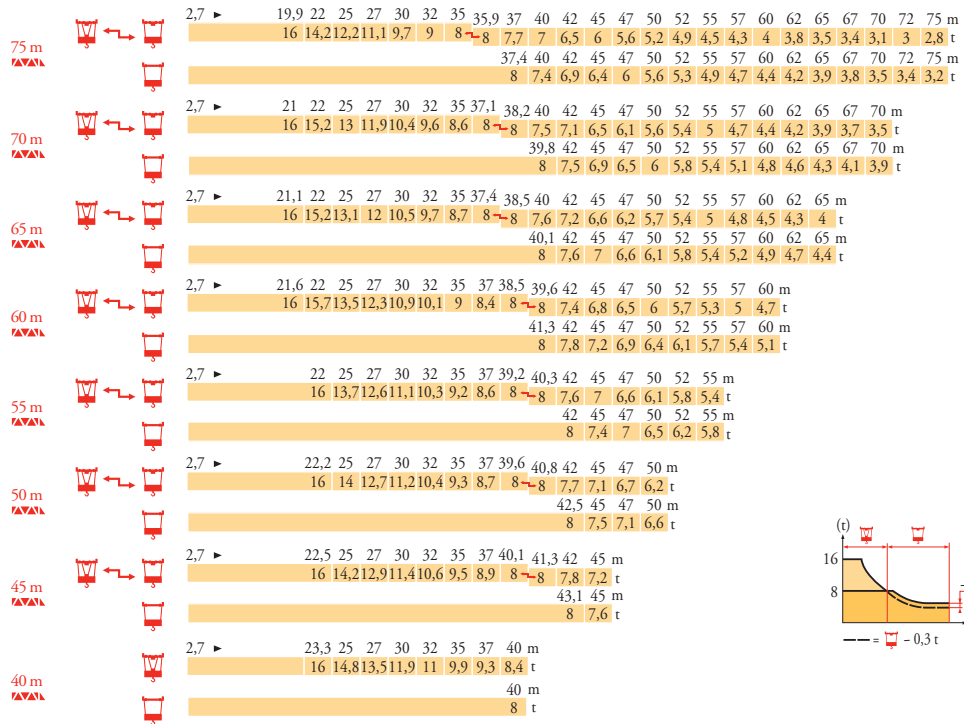


B 60 A

	■ 101 t
--	---------

Courbes de charges  
 Lastkurven  
 Load diagrams  
 Curvas de cargas  
 Curve di carico  
 Curva de cargas  
 Диаграммы  
 грузоподъемностей

MHX1

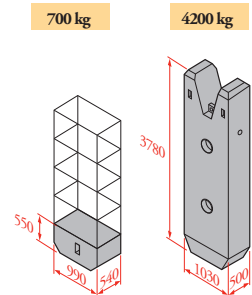


- FR** Réactions en service / Reaktionskräfte in Betrieb
  - DE** Reaktionskräfte in Betrieb / Reaktionskräfte außer Betrieb
  - EN** Reactions in service / Reactions out of service
  - ES** Reacciones en servicio / Reacciones fuera de servicio
  - IT** Reazioni in servizio / Reazioni fuori servizio
  - PT** Reacções em serviço / Reacções fora de serviço
  - RU** Реакции при работе / Реакции в покое
- FR** A vide sans lest (ni train de transport) avec flèche et hauteur maximum
  - DE** Ohne Last, Ballast (und Transportachse), mit Maximalausleger und Maximalhöhe
  - EN** Without load, ballast (or transport axes), with maximum jib and maximum height
  - ES** Sin carga, sin lastre, (ni tren de transporte), flecha y altura máxima
  - IT** A vuoto, senza zavorra (ne assali di trasporto) con braccio massimo e altezza massima
  - PT** Sem carga (nem trem de transporte)- sem lastro com lança e altura máximas
  - RU** Вес без груза, балласта (или транспортных осей), с максимальной длиной стрелы и максимальной высотой
- FR** Nous consulter
  - DE** Auf Anfrage
  - EN** Consult us
  - ES** Consultarnos
  - IT** Consultateci
  - PT** Consultar-nos
  - RU** Проконсультируйтесь у нас

Lest de contre-flèche  
Gegenauslegerballast  
Counter-jib ballast  
Lastre de contra flecha  
Contrappeso  
Lastros da contra lança  
Балласт на консоли

MHX1

L	B	75 LVF			100 LVF			150 LCC		
		4200 kg	700 kg	(kg)	4200 kg	700 kg	(kg)	4200 kg	700 kg	(kg)
75 m	24,2 m	5	4	23 800	5	3	23 100	5	2	22 400
70 m	24,2 m	5	-	21 000	4	5	20 300	4	3	18 900
65 m	24,2 m	4	3	18 900	4	3	18 900	4	1	17 500
60 m	24,2 m	4	-	16 800	3	5	16 100	3	3	14 700
55 m	24,2 m	3	3	14 700	3	3	14 700	3	2	14 000
50 m (B60A)	24,2 m	3	2	14 000	3	1	13 700	3	-	12 600
50 m	18,2 m	5	5	24 500	5	4	23 800	5	3	23 100
45 m	18,2 m	5	-	21 000	4	5	20 300	4	4	19 600
40 m	18,2 m	4	2	18 200	4	1	17 500	4	-	16 800



Lest de base - Grundballast  
Base ballast - Lastre de base  
Zavorra di base - Lastros da base  
Базовый балласт

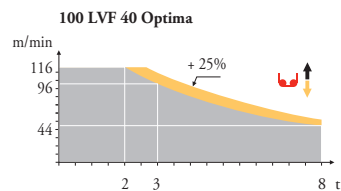
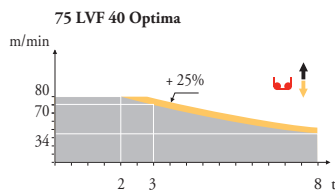
MHX1

L	V60A	H (m)	57,5	54,2	50,9	45,9	40,9	35,9	30,9	25,8	20,8	15,8	10,8
			(t)	108	96	96	84	84	84	84	84	84	84

Mécanismes  
Antriebe  
Mechanisms  
Mecanismos  
Meccanismi  
Mecanismos  
Механизмы

MHV1

Symbol	Model	Unit	U↑		UU↑				ch - PS hp	kW	Image	
			0	→	17	→	22	→				35
●	75 LVF40 Optima	m/min t	0	→ 34 → 44 → 70 → 80	0	→ 17	→ 22	→ 35	→ 40	75	55	553 m
	100 LVF40 Optima	m/min t	0	→ 44 → 56 → 96 → 116	0	→ 22	→ 28	→ 48	→ 58	100	75	1009 m
	150 LCC 40	m/min t	68	→ 82 → 102 → 136 → 162	34	→ 41	→ 51	→ 68	→ 81	150	110	596 m
◀▶	6 DVF 6	m/min	0 → 42(16 t)    0 → 84		(8 t)	0 → 100 (4 t)				5,5	4	
⊙	RVF 182 Optima +	tr/min U/min rpm	0 → 0,7						2 x 12	2 x 9		
●	V 60 A	RT 544 A1 2V R ≥ 13 m	13,5 - 27						4 x 7	4 x 5,2		
IEC 60204-32			kVA									
400 V (+10% -10%) 50 Hz / 480V (+6% -10%) 60Hz			75 LVF : 100 kVA 100 LVF : 125 kVA 150 LCC : 175 kVA									



**FR**  
Levage  
Distribution  
Orientation  
Translation

**DE**  
Heben  
Katzfahren  
Schwenken  
Kranfahren

**EN**  
Hoisting  
Trolleying  
Slewing  
Travelling

**ES**  
Elevación  
Distribución  
Orientación  
Traslación

**IT**  
Sollevamento  
Distribuzione  
Rotazione  
Traslazione

**PT**  
Elevação  
Distribuição  
Rotação  
Translação

**RU**  
Подъем  
Перемещение каретки  
Поворот  
Перемещение крана



Document commercial non contractuel. Pour toute information technique se référer à la notice correspondante.

Unverbindliches Vertriebsdokument. Für technische Informationen, siehe die entsprechenden Anweisungen.

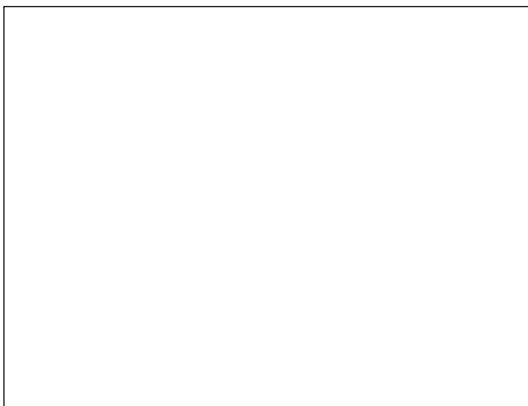
This commercial document is not legally binding. For any technical information, please refer to the corresponding instructions.

Documento comercial no contractual. Para cualquier información técnica, ver la noticia correspondiente.

Documento commerciale non vincolante, per tutte le informazioni tecniche fare riferimento al catalogo istruzioni.

Documento comercial não contratual. Para qualquer informação técnica complementar consultar as respectivas instruções.

Этот коммерческий документ не является юридически обязательным. Для получения технической информации, см. соответствующие инструкции.



**Manitowoc - Americas - World Headquarters**  
2400 S. 44th Street • Manitowoc • WI 54220 USA  
Tel: +1 920 684 4410 • Fax: +1 920 652 9778

**Manitowoc - Europe, Middle East & Africa**  
Ecully, France  
18, rue de Charbonnières B.P. 173 • 69132 ECULLY Cedex • FRANCE  
Tel: +33 (0)4 72 18 20 20 • Fax: +33 (0)4 72 18 20 00

**Manitowoc - Asia Pacific**  
16F Xu Hui Yuan Building,  
1089 Zhongshan No.2 Road (S) • Shanghai 200030 China  
Tel: +86 21 6457 0066 • Fax: +86 21 6457 4955