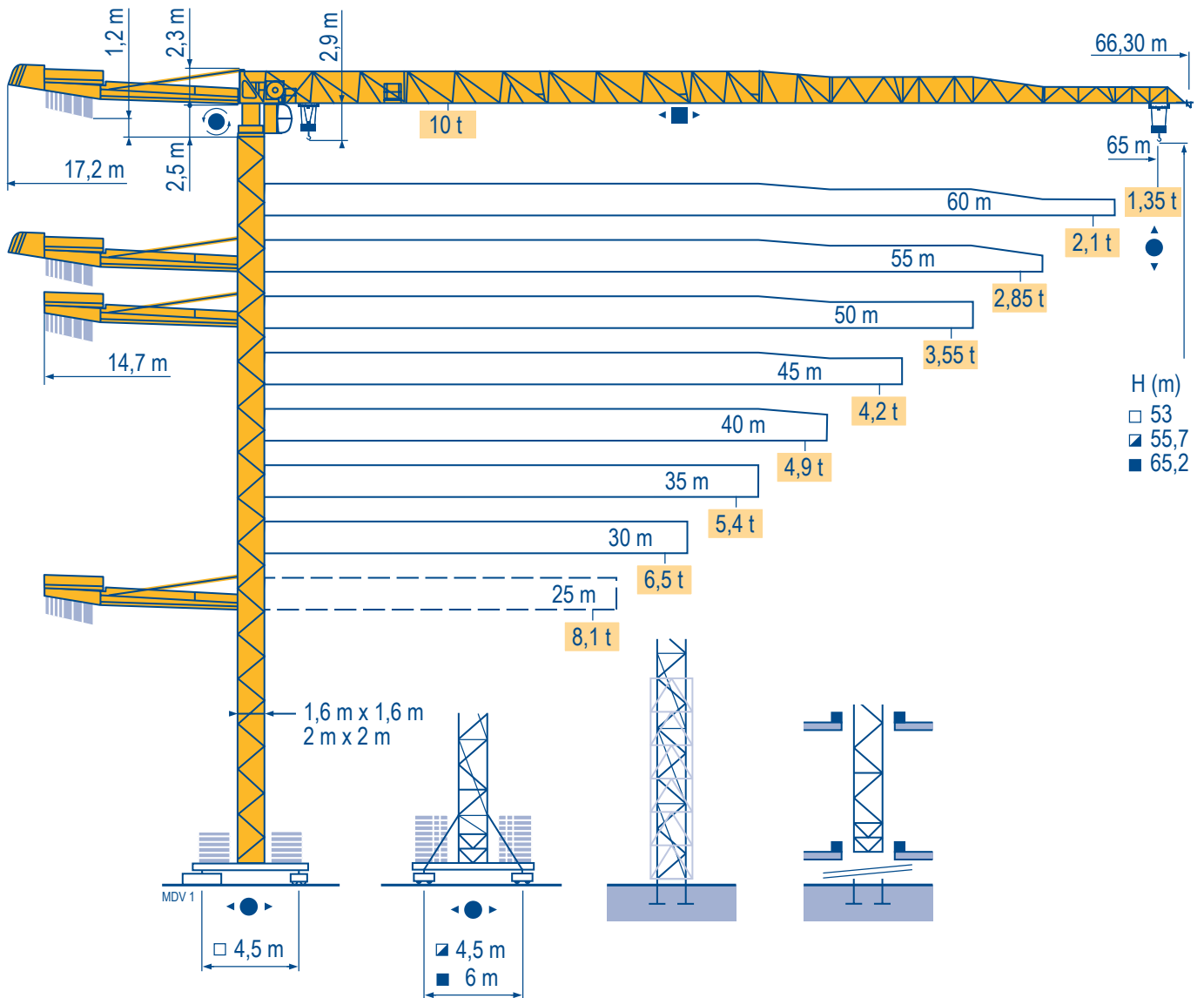


MDT 218 J10



City Topless

CE FEM 1.001-A3

Mat / Réactions \square 1,6 m

Maste /
Eckdrücke

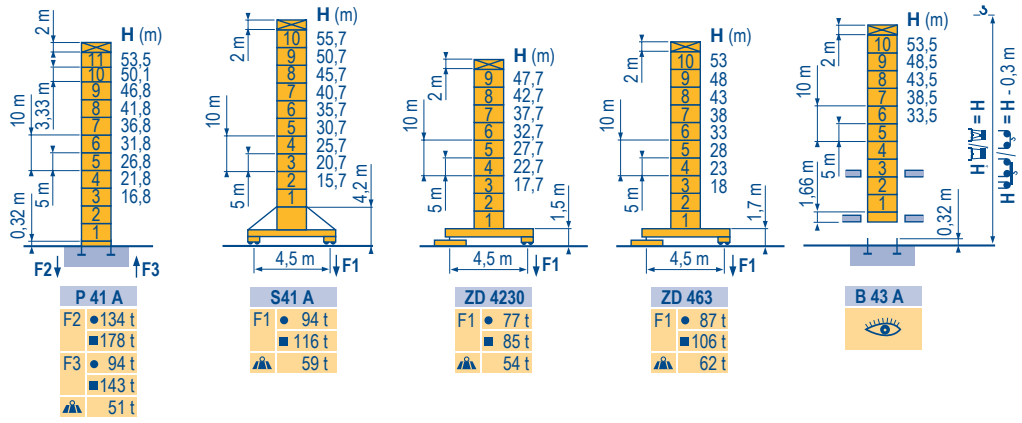
Masts /
Reactions

Mástil /
Reacciones

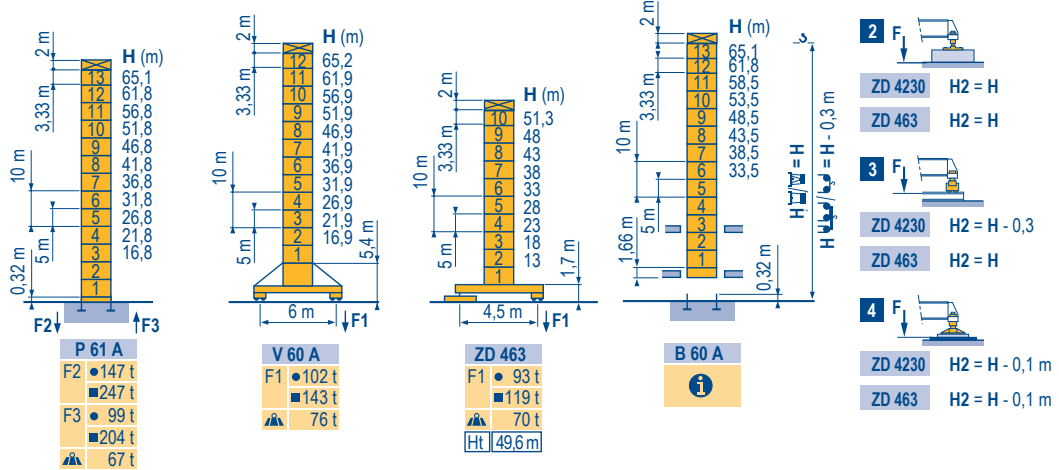
Torre / Reazioni

Tramo /
Reacções

MDV 1

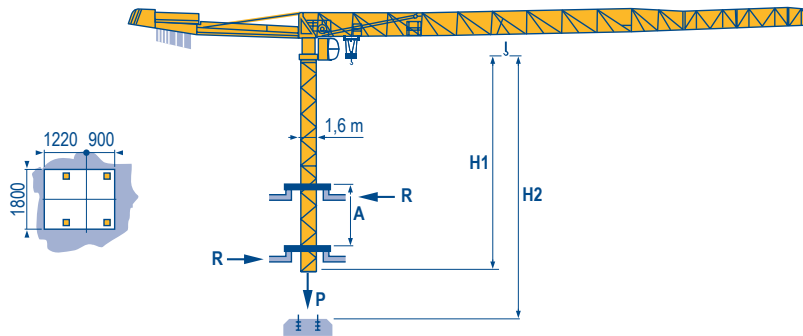


\square 2 m



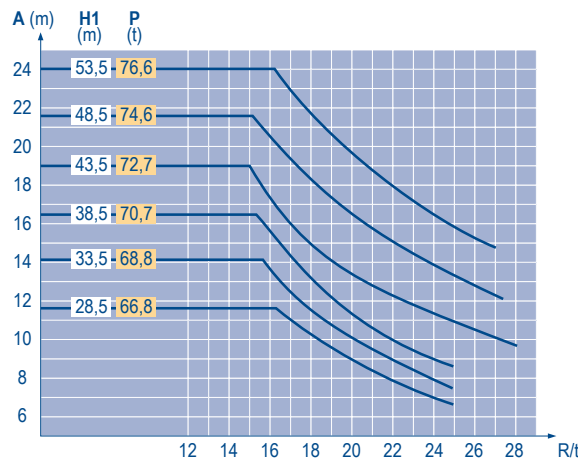
Télescopage sur dalles
Kletterkrane im Gebäude
Climbing crane
Telescopage gruas trepadoras
Gru in cavedio
Telescopagem sobre lagas

MDV 1



B 43 A

B 60 A **i**



City Topless
MDT 218 J10

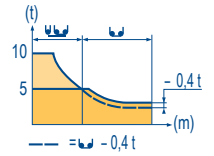
POTAIN **i**

| F | D | GB | E | I | P |
|--|--|---|---|---|---|
| ● | ● | ● | ● | ● | ● |
| ■ | ■ | ■ | ■ | ■ | ■ |
| ⚙️ | ⚙️ | ⚙️ | ⚙️ | ⚙️ | ⚙️ |
| ℹ️ | ℹ️ | ℹ️ | ℹ️ | ℹ️ | ℹ️ |
| Ht | Ht | Ht | Ht | Ht | Ht |
| Réactions en service Réactions hors service A vide sans lest (ni train de transport) avec flèche et hauteur maximum. | Reaktionskräfte in Betrieb Reaktionskräfte außer Betrieb Ohne Last, Ballast (und Transportachse), mit Maximalausleger und Maximalhöhe. | Reactions in service Reactions out of service Without load, ballast (or transport axes), with maximum jib and maximum height. | Reacciones en servicio Reacciones fuera de servicio Sin carga, sin lastre, (ni tren de transporte), flecha y altura máxima. | Reazioni in servizio Reazioni fuori servizio A vuoto, senza zavorra (ne assali di trasporto) con braccio massimo e altezza massima. | Reacções em serviço Reacções fora de serviço Sem carga (nem trem de transporte)- sem lastro com lança e altura máximas. |
| Nous consulter Hauteur maxi roulante | Auf Anfrage Fahrbare max. Höhe | Consult us Travelling maximum height | Consultarnos Altura máxima móvil | Consultateci Altezza massima gru traslante | Consultar-nos Altura máxima sobre translação |

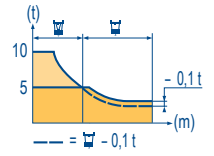
Courbes de charges
Lastkurven
Load diagrams
Curvas de cargas
Curve di carico
Curva de cargas

MDV 1

| | | | | | | | | | | | | | | | | | | | | | | | | | | |
|------|-----|---|------|------|-----|-----|------|------|------|------|------|------|------|-----|------|------|-----|------|------|-----|------|-----|------|------|----|---|
| 65 m | 3,1 | ▶ | 12,1 | 15 | 17 | 20 | 21,5 | 23,1 | 25 | 27 | 30 | 32 | 35 | 37 | 40 | 42 | 45 | 47 | 50 | 52 | 55 | 57 | 60 | 62 | 65 | m |
| ▲▲▲ | | | 10 | 7,7 | 6,7 | 5,5 | 5↔5 | 4,6 | 4,2 | 3,7 | 3,4 | 3 | 2,85 | 2,6 | 2,45 | 2,25 | 2,1 | 1,95 | 1,85 | 1,7 | 1,65 | 1,5 | 1,45 | 1,35 | t | |
| 60 m | 3,1 | ▶ | | 15,2 | 17 | 20 | 22 | 25 | 27,3 | 29,3 | 32 | 35 | 37 | 40 | 42 | 45 | 47 | 50 | 52 | 55 | 57 | 60 | ,m | | | |
| ▲▲▲ | | | 10 | 8,8 | 7,3 | 6,5 | 5,6 | 5↔5 | 4,5 | 4,1 | 3,8 | 3,5 | 3,3 | 3 | 2,85 | 2,65 | 2,5 | 2,35 | 2,25 | 2,1 | | | | | | t |
| 55 m | 3,1 | ▶ | | 17,6 | 20 | 22 | 25 | 27 | 30 | 31,8 | 33,9 | 35 | 37 | 40 | 42 | 45 | 47 | 50 | 52 | 55 | m | | | | | |
| ▲▲▲ | | | 10 | 8,6 | 7,7 | 6,7 | 6,1 | 5,4 | 5↔5 | 4,8 | 4,5 | 4,1 | 3,9 | 3,6 | 3,4 | 3,2 | 3 | 2,85 | | | | | | | | t |
| 50 m | 3,1 | ▶ | | 19,2 | 20 | 22 | 25 | 27 | 30 | 32 | 34,7 | 37,1 | 40 | 42 | 45 | 47 | 50 | m | | | | | | | | |
| ▲▲▲ | | | 10 | 9,5 | 8,6 | 7,4 | 6,7 | 6 | 5,5 | 5↔5 | 4,6 | 4,3 | 4 | 3,8 | 3,55 | t | | | | | | | | | | |
| 45 m | 3,1 | ▶ | | 19,9 | 22 | 25 | 27 | 30 | 32 | 35 | 36,1 | 38,6 | 40 | 42 | 45 | m | | | | | | | | | | |
| ▲▲▲ | | | 10 | 8,9 | 7,7 | 7,1 | 6,2 | 5,8 | 5,2 | 5↔5 | 4,8 | 4,5 | 4,2 | 4,5 | 4,2 | t | | | | | | | | | | |
| 40 m | 3,1 | ▶ | | 20,3 | 22 | 25 | 27 | 30 | 32 | 35 | 36,8 | 39,3 | 40 | m | | | | | | | | | | | | |
| ▲▲▲ | | | 10 | 9,1 | 7,9 | 7,2 | 6,4 | 5,9 | 5,3 | 5↔5 | 4,9 | t | | | | | | | | | | | | | | |
| 35 m | 3,1 | ▶ | | 20,6 | 22 | 25 | 27 | 30 | 32 | 35 | m | | | | | | | | | | | | | | | |
| ▲▲▲ | | | 10 | 9,3 | 8 | 7,3 | 6,5 | 6 | 5,4 | t | | | | | | | | | | | | | | | | |
| 30 m | 3,1 | ▶ | | 20,6 | 22 | 25 | 27 | 30 | m | | | | | | | | | | | | | | | | | |
| ▲▲▲ | | | 10 | 9,3 | 8 | 7,3 | 6,5 | t | | | | | | | | | | | | | | | | | | |
| 25 m | 3,1 | ▶ | | 20,8 | 22 | 25 | m | | | | | | | | | | | | | | | | | | | |
| ▲▲▲ | | | 10 | 9,4 | 8,1 | t | | | | | | | | | | | | | | | | | | | | |



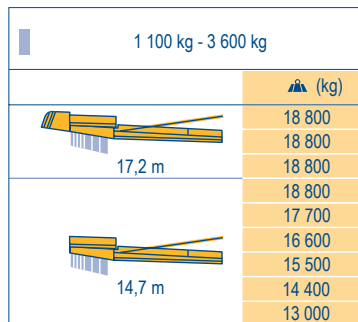
| | | | | | | | | | | | | | | | | | | | | | | | | | | |
|------|-----|---|------|------|-----|-----|------|------|------|------|------|------|------|------|-----|-----|-----|-----|-----|------|------|------|-----|-----|----|---|
| 65 m | 3,1 | ▶ | 12,5 | 15 | 17 | 20 | 22,5 | 22,9 | 25 | 27 | 30 | 32 | 35 | 37 | 40 | 42 | 45 | 47 | 50 | 52 | 55 | 57 | 60 | 62 | 65 | m |
| ▲▲▲ | | | 10 | 8,1 | 7 | 5,8 | 5↔5 | 4,5 | 4,1 | 3,6 | 3,3 | 2,95 | 2,75 | 2,45 | 2,3 | 2,1 | 2 | 1,8 | 1,7 | 1,55 | 1,5 | 1,35 | 1,3 | 1,2 | t | |
| 60 m | 3,1 | ▶ | | 15,7 | 17 | 20 | 22 | 25 | 28,3 | 28,8 | 30 | 32 | 35 | 37 | 40 | 42 | 45 | 47 | 50 | 52 | 55 | 57 | 60 | m | | |
| ▲▲▲ | | | 10 | 9,1 | 7,5 | 6,7 | 5,8 | 5↔5 | 4,8 | 4,4 | 4 | 3,7 | 3,4 | 3,2 | 2,9 | 2,7 | 2,5 | 2,4 | 2,2 | 2,1 | 1,95 | t | | | | |
| 55 m | 3,1 | ▶ | | 17,9 | 20 | 22 | 25 | 27 | 30 | 32,5 | 33,2 | 35 | 37 | 40 | 42 | 45 | 47 | 50 | 52 | 55 | m | | | | | |
| ▲▲▲ | | | 10 | 8,8 | 7,9 | 6,8 | 6,2 | 5,5 | 5↔5 | 4,7 | 4,4 | 4 | 3,8 | 3,5 | 3,3 | 3 | 2,9 | 2,7 | t | | | | | | | |
| 50 m | 3,1 | ▶ | | 19,5 | 20 | 22 | 25 | 27 | 30 | 32 | 35,5 | 36,2 | 40 | 42 | 45 | 47 | 50 | m | | | | | | | | |
| ▲▲▲ | | | 10 | 9,7 | 8,7 | 7,5 | 6,9 | 6,1 | 5,7 | 5↔5 | 4,4 | 4,2 | 3,9 | 3,7 | 3,4 | t | | | | | | | | | | |
| 45 m | 3,1 | ▶ | | 20,2 | 22 | 25 | 27 | 30 | 32 | 35 | 36,9 | 37,7 | 40 | 42 | 45 | m | | | | | | | | | | |
| ▲▲▲ | | | 10 | 9,1 | 7,9 | 7,2 | 6,4 | 5,9 | 5,3 | 5↔5 | 4,7 | 4,4 | 4,05 | t | | | | | | | | | | | | |
| 40 m | 3,1 | ▶ | | 20,6 | 22 | 25 | 27 | 30 | 32 | 35 | 37,5 | 38,3 | 40 | m | | | | | | | | | | | | |
| ▲▲▲ | | | 10 | 9,3 | 8 | 7,3 | 6,5 | 6 | 5,4 | 5↔5 | 4,75 | t | | | | | | | | | | | | | | |
| 35 m | 3,1 | ▶ | | 20,8 | 22 | 25 | 27 | 30 | 32 | 35 | m | | | | | | | | | | | | | | | |
| ▲▲▲ | | | 10 | 9,4 | 8,1 | 7,4 | 6,6 | 6,1 | 5,5 | t | | | | | | | | | | | | | | | | |
| 30 m | 3,1 | ▶ | | 20,8 | 22 | 25 | 27 | 30 | m | | | | | | | | | | | | | | | | | |
| ▲▲▲ | | | 10 | 9,4 | 8,1 | 7,5 | 6,6 | t | | | | | | | | | | | | | | | | | | |
| 25 m | 3,1 | ▶ | | 21 | 22 | 25 | m | | | | | | | | | | | | | | | | | | | |
| ▲▲▲ | | | 10 | 9,5 | 8,2 | t | | | | | | | | | | | | | | | | | | | | |



Lest de contre-flèche
Gegenauslegerballast
Counter-jib ballast
Lastre de contra flecha
Contrappeso
Lastros da contra lança

MDV 1

| | |
|---------------------|--------|
| 1 100 kg - 3 600 kg | |
| ▲▲▲ | ▲ (kg) |
| 65 m | 18 800 |
| 60 m | 18 800 |
| 55 m | 18 800 |
| 50 m | 18 800 |
| 45 m | 17 700 |
| 40 m | 16 600 |
| 35 m | 15 500 |
| 30 m | 14 400 |
| 25 m | 13 000 |



Lest de base
Grundballast
Base ballast
Lastre de base
Zavorra di base
Lastros da base

MDV 1

| | | | | | | | | | | | | | | |
|---------|---------|----|-------|------|------|------|------|------|------|------|------|------|------|------|
| ☐ 1,6 m | S 41 A | •• | H (m) | 55,7 | 50,7 | 45,7 | 40,7 | 35,7 | 30,7 | 25,7 | 20,7 | 15,7 | | |
| | | | ▲ (t) | 114 | 84 | 78 | 78 | 78 | 78 | 78 | 78 | 78 | | |
| ☐ 1,6 m | ZD 4230 | •• | H (m) | 47,7 | 42,7 | 37,7 | 32,7 | 27,7 | 22,7 | 17,7 | | | | |
| | | | ▲ (t) | 80 | 80 | 80 | 80 | 80 | 80 | 80 | | | | |
| ☐ 1,6 m | ZD 463 | •• | H (m) | 53 | 48 | 43 | 38 | 33 | 28 | 23 | 18 | | | |
| | | | ▲ (t) | 95 | 75 | 75 | 75 | 75 | 75 | 75 | 75 | | | |
| ☐ 2 m | V 60 A | •• | H (m) | 65,2 | 61,9 | 56,9 | 51,9 | 46,9 | 41,9 | 36,9 | 31,9 | 26,9 | 21,9 | 16,9 |
| | | | ▲ (t) | 132 | 120 | 84 | 60 | 48 | 36 | 36 | 36 | 36 | 36 | 36 |
| ☐ 2 m | ZD 463 | •• | H (m) | 51,3 | 49,6 | 48 | 43 | 38 | 33 | 28 | 23 | 18 | 13 | |
| | | | ▲ (t) | 105* | 95 | 80 | 70 | 70 | 70 | 70 | 70 | 70 | 70 | |











City Topless
MDT 218 J10



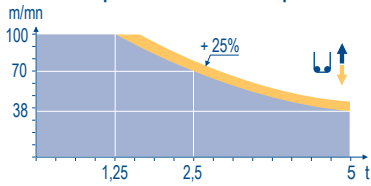
| | | | | | | |
|-----------|-----------------------------------|-------------------------------|---------------------------|-----------------------------------|------------------------------|---------------------------------------|
| A | F | D | GB | E | I | P |
| H1 | Distance entre cadres | Abstand zwischen den Rahmen | Distance between collars | Distancia entra marcos | Distanza fra i telai | Distância entre quadros |
| P | Hauteur grue | Kranhöhe | Crane height | Altura grúa | Altezza gru | Altura da grua |
| R | Poids de la grue(en service) | Krangelgewicht (in Betrieb) | Crane weight (in service) | Peso de la grúa (en servicio) | Peso della gru (in servizio) | Peso da grua (em serviço) |
| 👁️ | Réaction horizontale | Horizontalkräfte | Horizontal reaction | Reaccion horizontal | Reazione orizzontale | Reacção horizontal |
| * | Voir télescopage sur dalles | Siehe Kletterkrane im Gebäude | See climbing crane | Veja grua trepadora | Consultare gru in cavedio | Ver telescopagem sobre lages |
| | Utilisation poste fixe uniquement | Nur stationärer Einsatz | Only static use | Utilización chasis fijo solamente | Solo in postazione fissa | Utilização sobre chassis fixo apoiado |

Mécanismes
Antriebe
Mechanisms
Mecanismos
Meccanismi
Mecanismos


MDV 1

| | | U | | | | | | U | | | | | | ch - PS hp | kW |  | |
|---|---------------------------------------|--|-----------|----|----|------|-----|-----------------|-----|----|----|-----|----|---------------|---------|--|-------|
|  | 50 LVF 25 Optima | m/min | 3 | 12 | 38 | 50 | 70 | 100 | 1,5 | 6 | 19 | 25 | 35 | 50 | 50 | 37 | 278 m |
| | t | | 5 | 5 | 5 | 3,75 | 2,5 | 1,25 | 10 | 10 | 10 | 7,5 | 5 | 2,5 | | | |
|  | 50 LVF 25 GH Optima | m/min | 3 | 12 | 38 | 50 | 70 | 100 | 1,5 | 6 | 19 | 25 | 35 | 50 | 50 | 37 | 515 m |
| | t | | 5 | 5 | 5 | 3,75 | 2,5 | 1,25 | 10 | 10 | 10 | 7,5 | 5 | 2,5 | | | |
|  | 7 DVF 4 | m/min | 0 → 79 | | | | | | | | | | | | 6,5 | 4,8 | |
|  | RVF 152 Optima + | tr/min U/min - rpm | 0 → 0,8 | | | | | | | | | | | | 2 x 5,5 | 2 x 4 | |
|  | ZD 4230 RT 324 | m/min | 12,5 - 25 | | | | | | | | | | | | 2 x 7 | 2 x 5,2 | |
|  | ZD 463 RT 443 A1 2V | m/min | 15 - 30 | | | | | | | | | | | | 4 x 5 | 4 x 3,7 | |
|  | S 41 A RT 443 A1 2V R ≥ 10 m | m/min | 15 - 30 | | | | | | | | | | | | 4 x 5 | 4 x 3,7 | |
|  | V 60 A RT 544 A1 2V R ≥ 13 m | m/min | 13,5 - 27 | | | | | | | | | | | | 4 x 7 | 4 x 5,2 | |
| | | CEI 38  | IEC 38 | | | | | | kVA | | | | | | | | |
| | | 400 V (+6% -10%) | | | | | | 50 LVF : 65 kVA | | | | | | | | | |

50 LVF 25 Optima - 50 LVF 25 GH Optima



| | F | D | GB | E | I | P |
|--|--------------|------------|------------|--------------|---------------|--------------|
|  | Levage | Heben | Hoisting | Elevación | Sollevamento | Elevação |
|  | Distribution | Katzfahren | Trolleying | Distribución | Distribuzione | Distribuição |
|  | Orientation | Schwenken | Slewing | Orientación | Rotazione | Rotação |
|  | Translation | Kranfahren | Travelling | Traslación | Traslazione | Translação |

 Document commercial non contractuel. Pour toute information technique se référer à la notice correspondante. Unverbindliches Vertriebsdokument. Für technische Informationen, siehe die entsprechenden Anweisungen. This commercial document is not legally binding. For any technical information, please refer to the corresponding instructions. Documento comercial non contractuel. Para cualquier información técnica, ver la noticia correspondiente. Documento commerciale non vincolante, per tutte le informazioni tecniche fare riferimento al catalogo istruzioni. Documento comercial não contratual. Para qualquer informação técnica complementar consultar as respectivas instruções.



Americas
Tel : +1 888 479 7278
Tel : +1 717 593 2000

Europe - Middle East - Africa
Tel : +33 (0) 4 72 81 50 00
Tel : +44 (0) 191 522 2000

Asia - Pacific
Tel : +65 6264 1188
Fax : +65 6862 4040

www.manitowoccrane.com

18, rue de Charbonnières - B.R.173
69132 ECULLY Cedex - France

Tél. : +33 (0) 4 72 18 20 20
Fax. : +33 (0) 4 72 18 20 00
www.manitowoccrane.com

City Topless MDT 218 J10
Code N-89985-55_Ref. 2006 38 MDV 1

Copyright.Reproduction interdite © POTAIN 2006

Réalisation Secdoc