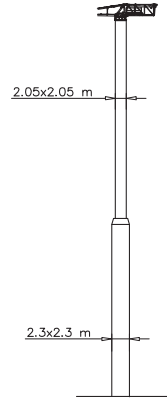


Torre/Reazioni | Masts/Reactions | Mat/Réactions | Maste/Eckdrücke | Mástil/Reacciones | Tramo/Reacções

SN2050

 20 m \rightarrow 80 m

		Torre/Masts/Mat/Maste/Mástil/Tramo																
	H[m]	4f/4f BFL117	4f/4f BF117	4f/4f BF052	4f/4f BF039	4f/2f SB117	4f/2f SB052	4f/2f SB039	2f/2f ST117	2f/2f ST052	2f/2f ST039	2f/2f STB117	2f/2f STB039	2f/2f RA039	4f/2f SBB039	4f/2f SBB117	4f/4f BFB117	4f/4f BFB039
TRO	53.3	1	2	2				1			5							
TTD	52	2	1		1				1									
	52	3			1					1								
	52		6				1			3								
	54.6												5	1	1			7
	54.6												4	1	1		1	5



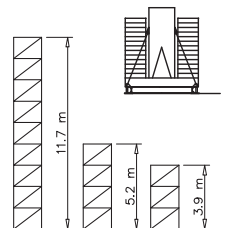
		Torre/Masts/Mat/Maste/Mástil/Tramo																
	H[m]	4f/4f BFL117	4f/4f BF117	4f/4f BF052	4f/4f BF039	4f/2f SB117	4f/2f SB052	4f/2f SB039	2f/2f ST117	2f/2f ST052	2f/2f ST039	2f/2f STB117	2f/2f STB039	2f/2f RA039	4f/2f SBB039	4f/2f SBB117	4f/4f BFB117	4f/4f BFB039
BA052	58.5	1	2	2				1			5							
R2	57.2	2	1		1				1									
	57.2	3			1					1								
CAF	57.2		6				1			3								
	59.8												5	1	1			7
	59.8												4	1	1		1	5

H=0-44 m	
R1	135 t
R2	140 t
R3	92 t
M	498 tm
H=45-62 m	
R1	174 t
R2	181 t
R3	119 t
M	637 tm

		Torre/Masts/Mat/Maste/Mástil/Tramo																
	H[m]	4f/4f BFL117	4f/4f BF117	4f/4f BF052	4f/4f BF039	4f/2f SB117	4f/2f SB052	4f/2f SB039	2f/2f ST117	2f/2f ST052	2f/2f ST039	2f/2f STB117	2f/2f STB039	2f/2f RA039	4f/2f SBB039	4f/2f SBB117	4f/4f BFB117	4f/4f BFB039
R1	50.7	3				1					1							
	47.9	2					1				2							
	49.4		5			1				4								
CATR													3	1	1			7
CATC													2	1	1		1	5

Peso zavorra | Ballast weight | Poids du lest | Ballastgewicht | Peso de lastre



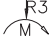
H	Tot.
0-44 m	98000 kg
45-59 m	132740 kg

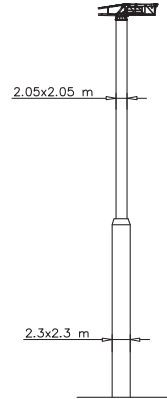


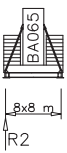

Torre/Reazioni | Masts/Reactions | Mat/Réactions | Maste/Eckdrücke | Mástil/Reacciones | Tramo/Reacções

SP2300

 20 m \rightarrow 80 m

		Torre/Masts/Mat/Maste/Mástil/Tramo																	
	H[m]	BFL117	BF117	BF052	BF039	SB117	SB052	SB039	ST117	ST052	ST039	STB117	STB039	RA039	SBB039	SBB117	BFB117	BFB039	
TRO 		4f/4f	4f/4f	4f/4f	4f/4f	4f/4f	4f/4f	4f/4f	4f/4f	4f/4f	4f/4f	4f/4f	4f/4f	4f/4f	4f/4f	4f/4f	4f/4f	4f/4f	4f/4f
	58.5								5										
TTD 	57.2									11									
	41.6									5	4								
* 	58.5												6	1				1	5
	58.5												6	1				8	





		Torre/Masts/Mat/Maste/Mástil/Tramo																	
	H[m]	BFL117	BF117	BF052	BF039	SB117	SB052	SB039	ST117	ST052	ST039	STB117	STB039	RA039	SBB039	SBB117	BFB117	BFB039	
	65									5									
	58.5									10									
	48.1									5	4								
* 	65												6	1			1	5	
	65												6	1				8	

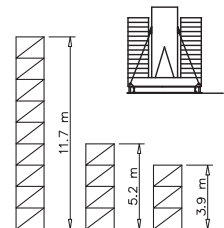
H=0-49 m	R1	141 t
	R2	152 t
	R3	128 t
	M	775 tm

H=50-74 m	R1	181 t
	R2	190 t
	R3	160 t
	M	973 tm

Peso zavorra | Ballast weight | Poids du lest | Ballastgewicht | Peso de lastre

H	Tot.
0-44 m	114000 Kg
45-64 m	146000 kg

		Torre/Masts/Mat/Maste/Mástil/Tramo																	
	H[m]	BFL117	BF117	BF052	BF039	SB117	SB052	SB039	ST117	ST052	ST039	STB117	STB039	RA039	SBB039	SBB117	BFB117	BFB039	
	57.2																		
	55.9								4										
	40.3									8	2								
* 	57.2									5	2							1	5
	57.2												4	1					8



Curve di carico | Courbes de charges | Load diagrams | LastKurven | Curvas de cargas

Pmax 8000 kg

	24960 kg	80 m	2.7	29.8	30	35	40	45	50	55	60	65	70	75	80
			8000	8000	7900	6700	5700	4950	4350	3850	3400	3050	2750	2500	2000
	24960 kg	78.3 m	2.7	29.8	30	35	40	45	50	55	60	65	70	75	78.3
			8000	8000	7900	6700	5700	4950	4350	3850	3400	3050	2750	2500	2300
	23400 kg	72.7 m	2.7		32.4	35	40	45	50	55	60	65	70	72.7	
			8000	8000	7700	6760	5700	4950	4310	3800	3050	3200	2900		
	21840 kg	67.1 m	2.7			33.5	40	45	50	55	60	65	67.1		
			8000	8000	7400	6430	5550	4880	4350	3860	3530				
	20280 kg	61.5 m	2.7				36.8	40	45	50	55	60	61.5		
			8000	8000	7600	6700	5850	5100	4400	4250					
	18720 kg	55.9 m	2.7					39.2	45	50	55	55.9			
			8000	8000	7100	6000	5320	5200							
	18720 kg	50.3 m	2.7						40.1	45	50	50.3			
			8000	8000	7000	6200	6150								



Pmax 16000/8000 kg

	24960 kg	80 m	2.7	15.5	20	25	29.8	30	35	40	45	50	55	60	65	70	75	80
			16000	16000	12700	9900	8000	7900	6700	5700	4950	4350	3850	3400	3050	2750	2500	2000
	24960 kg	78.3 m	2.7	15.5	20	25	29.8	30	35	40	45	50	55	60	65	70	75	78.3
			16000	16000	12700	9900	8000	7900	6700	5700	4950	4350	3850	3400	3050	2750	2500	2300
	23400 kg	72.7 m	2.7	17.8	20	25	30	32.4	35	40	45	50	55	60	65	70	72.7	
			16000	16000	14350	11280	9200	8000	7700	6760	5700	4950	4310	3800	3050	3200	2900	
	21840 kg	67.1 m	2.7	18.6	20	25	30	33.5	40	45	50	55	60	65	67.1			
			16000	16000	15300	12050	9880	8300	8000	7400	6430	5550	4880	4350	3860	3530		
	20280 kg	61.5 m	2.7	19.4	20	25	30	35	36.8	40	45	50	55	60	61.5			
			16000	16000	15800	12570	10450	8850	8000	7600	6700	5850	5100	4400	4250			
	18720 kg	55.9 m	2.7		20.5	25	30	35	39.2	45	50	55	55.9					
			16000	16000	13250	10800	9050	8000	7100	6000	5320	5200						
	18720 kg	50.3 m	2.7			21.3	25	30	35	40	40.1	45	50	50.3				
			16000	16000	13740	11400	9550	8050	8000	7000	6200	6150						



Pmax 12000/6000 kg

	24960 kg	80 m	2.7		19	20	25	29.8	30	35	40	45	50	55	60	65	70	75	80
			12000	12000	12700	9900	8000	7900	6700	5700	4950	4350	3850	3400	3050	2750	2500	2000	
	24960 kg	78.3 m	2.7			23	25	29.8	30	35	40	45	50	55	60	65	70	75	78.3
			12000	12000	9900	8000	7900	6700	5700	4950	4350	3850	3400	3050	2750	2500	2300		
	23400 kg	72.7 m	2.7				23	30	32.4	35	40	45	50	55	60	65	70	72.7	
			12000	12000	9200	8000	7700	6760	5700	4950	4310	3800	3050	3200	2900				
	21840 kg	67.1 m	2.7				25	30	33.5	40	45	50	55	60	65	67.1			
			12000	12000	9880	8300	8000	7400	6430	5550	4880	4350	3860	3530					
	20280 kg	61.5 m	2.7				24	30	35	36.8	40	45	50	55	60	61.5			
			12000	12000	10450	8850	8000	7600	6700	5850	5100	4400	4250						
	18720 kg	55.9 m	2.7					26	30	35	39.2	45	50	55	55.9				
			12000	12000	10800	9050	8000	7100	6000	5320	5200								
	18720 kg	50.3 m	2.7						28	30	35	40	40.1	45	50	50.3			
			12000	12000	11400	9550	8050	8000	7000	6200	6150								



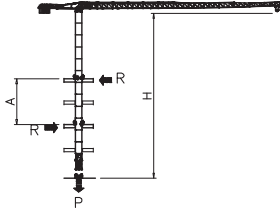
Pesi e ingombri | Packing list | Liste de colisage | Gewicht und abmessungen

Denominazione Description	Disegno Draw	Pezzi Pieces	Dimensioni-Dimensions (mm)			Peso-Weight (kg)		
			L	W	H	Unit	Total	
Elemento di braccio Jib element Elément de èche Elemento de flecha (80 m jib version)	n°14		1	6230	1540	2320	3737	-
	n°13		1	6000	1500	2320	2439	-
	n°12		1	5960	1500	2250	2408	-
	n°11		1	5960	1500	2230	1894	-
	n°10		1	5860	1500	2216	1633	-
	n°9		1	5875	1500	2196	1392	-
	n°8		1	5840	1500	2176	1229	-
	n°7		1	5830	1500	1730	1025	-
	n°6		1	5820	1500	1700	913	-
	n°5		1	5800	1500	1670	766	-
	n°4		1	5775	1500	1600	610	-
	n°3		1	5740	1500	1600	475	-
	n°2		1	5736	1500	1280	377	-
	n°1		1	6000	1500	1280	275	-
n°1/A con punta braccio		1	2200	1500	1280	165	-	
Contorbraccio completo Complete counterjib Contreflèche complète Contraflecha completa	5000 Kg	5000 Kg (V100-130)	1	9500	2400	2010	10000	-
Gruppo girevole Slewing group Table tournante Grupo giratorio		SP2300	-	3035	2230	2370	9500	-
		SN2050	-	3035	2230	2370	9000	-
Carrello Trolley Chariot Carretilla	P16		1	1970	1910	815	600	-
Ballatoio con cabina Access balcony with cabin Porte cabine Balcón corrido con cabina			1	2500	2150	2450	1000	-
Blocchi contrappeso Counterweight block Contre-poids Bloques de contrapeso		VS15	2	1000	200	3550	1560	3120
		VX32	7	1000	400	3550	3120	21840

Pesi e ingombri | Packing list | Liste de colisage | Gewicht und abmessungen

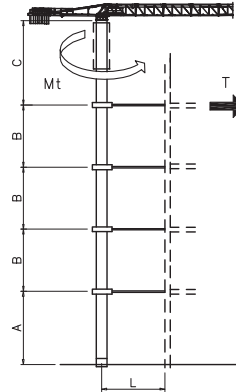
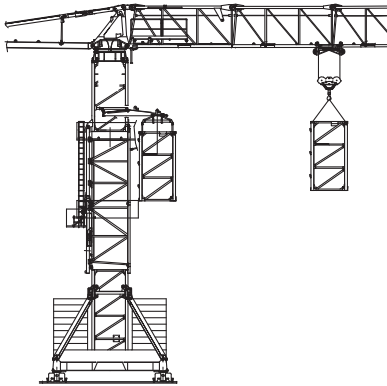
Denominazione Description	Disegno Draw	Pezzi Pieces	Dimensioni-Dimensions (mm)			Peso-Weight (kg)			
			L	W	H	Unit	Total		
Controbraccio counter jib Contrefleche Contraflecha			11500	2360	1600	6000			
Elemento di torre Mast element Elément de mature Elemento de torre	STD039		SP2300	—	3900	2360	2360	2603	—
			SN2050	—	3900	2110	2110	2320	—
	STD052		SP2300	—	5200	2360	2360	3198	—
			SN2050	—	5200	2110	2110	2850	—
	STD117		SP2300	—	11700	2360	2360	6475	—
			SN2050	—	11700	2110	2110	5790	—
	SB039		SP2300	—	3900	2360	2360	3031	—
			SN2050	—	3900	2110	2110	2710	—
	SB052		SP2300	—	5200	2360	2360	3470	—
			SN2050	—	5200	2110	2110	3350	—
	SB117		SP2300	—	11700	2360	2360	7830	—
			SN2050	—	11700	2110	2110	7000	—
	BF039		SP2300	—	3900	2360	2360	4210	—
			SN2050	—	3900	2110	2110	3770	—
BF052		SP2300	—	5200	2360	2360	4340	—	
		SN2050	—	5200	2110	2110	3880	—	
BF117		SP2300	—	11700	2360	2360	9150	—	
		SN2050	—	11700	2110	2110	8180	—	
Elemento di base Base element Mat de base Elemento de base		SP2300	1	6500	2360	2360	4220	—	
		SN2050	1	5200	2260	2260	4040	—	
Carro di base Base carriage Chassis de base Cruceta de base		8x8	1	11830	670	780	3340	3340	
		6x6	1	8870	670	780	2500	2500	
		8x8	2	5760	420	780	1600	3200	
		6x6	2	4320	420	780	1200	2400	
Puntoni di base Rafter Jambes de force Cabrios de base		8x8	4	6080	420	300	560	2240	
		6x6	4	4560	420	300	420	1680	
Elemento a perdere Disposable frame Chassis a perdre Bastidor desechable		SP2300	1	3000	2360	2360	2350	—	
		SN2050	1	2600	2260	2260	2030	—	
Elemento recuperabile Recoverable frame Chassis récupérable Bastidor recuperable		SP2300	1	1300	2900	2900	2100	—	
		SN2050	1	1300	2620	2620	1860	—	
Bogie di traslazione Driven bogie Boggie motorisèè Balancin de traslaciòn			4	1160	700	600	700	2800	
Blocco zavorra di base Base ballast block Lest de base Bloque de lastre		8x8	2	8300	1200	600	11900	23800	
		6x6	2	6400	1200	600	10600	21200	
		8x8	—	6400	1600	300	5700	—	
		6x6	—	4800	2000	300	5070	—	
Corsoio di montaggio Climbing cage Cage de montage Jaula de montaje		SP2300	1	8300	3250	3000	7500	—	
		SN2050	1	8300	2900	2700	6700	—	

Gru in cavedio | Téléscopage sur dalles | Climbing crane | Kletterkrane im Gebäude



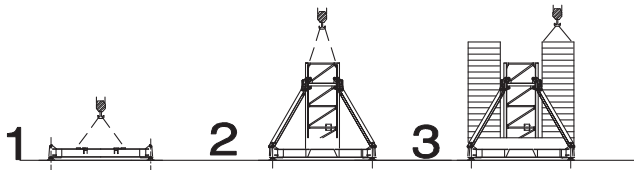
SN2050	H (m)	A (m)	R (t)	P (t)
	9	45.3		
	10	42		
	11	39.3		
	12	37		
	13	35		
	14	33.4		
	15	32		
	16	30.7		
	17	29.6		
	18	28.6		
Apertura passaggio gru Opening for crane passing 	19	27.8		
	20	27		

Sopralzo idraulico | Telescopic | External climbing | Kletterkrane

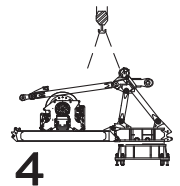


	SP2300	SN2050
C	31.2 m	31.2 m
B	19.5 m	19.5 m
A	56 m	50 m
T	23.4 m	27.5 m
MT	26 t xm	26 t xm

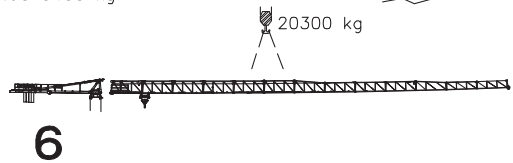
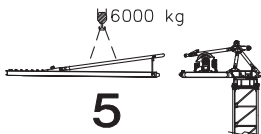
Montaggio | Montage | Erection | Montage | Montaje | Montagem



19000 kg con/with V100.100



- Gruppo rotazione 9000/9500 kg
Slewing table
- Controbraccio e argano sollevamento V100.100 10000 kg
Counterjib and hoisting winch
- Controbraccio e argano sollevamento V60.60 9400 kg
Counterjib and hoisting winch



Meccanismi | Mechanisms | Mécanismes | Antriebe | Mecanismos

Sollevamento V60.60 Hoisting Levage Heben Elevaciòn Elevaçao													V60.60 33 kW 57 kVA 270 m	
	m/min	2	20	31	46	60	72	1	10	15	23	30		36
	t	8	8	7	4.5	3	1.4	16	16	14	9	6		2.8
Sollevamento V100.100 Hoisting Levage Heben Elevaciòn Elevaçao													V100.100 75 kW 110 kVA 360 m 750 m (L)	
	m/min	4	21	40	64	86	100	2	10	20	32	43		50
	t	8	8	8	5.5	3.8	2	16	16	16	11	7.6		4
Sollevamento V100.130 Hoisting Levage Heben Elevaciòn Elevaçao													V100.130 75 kW 110 kVA 360 m 750 m (L)	
	m/min	6	28	54	86	115	130	3	14	27	43	57		65
	t	6	6	6	4	2.8	1.4	12	12	12	8	5.6		2.8
Carrello Trolleying Distribution Katzfahren Distribuciòn Distribuiçao			0 → 80 0 → 120 OP	m/min	5.5 kW	Potenza elettrica necessaria Puissance électrique nécessaire Necessary electric power Anschlusswert = Potencia								
Rotazione Slewing Orientation Schwenken Orientaciòn Rotaçao			0 → 0,9	giri/min tr/min rp/min	8.8 kW @ 1200rpm n° 4 x 2.2 kW									
Traslazione Travelling Translation Kranfahren Traslaciòn Traslaçao			0 → 20	m/min	9 kW									

Rete elettrica | Réseau | Mains supply | Netzstrom | Red | Rede electrica

400 V - 50 Hz