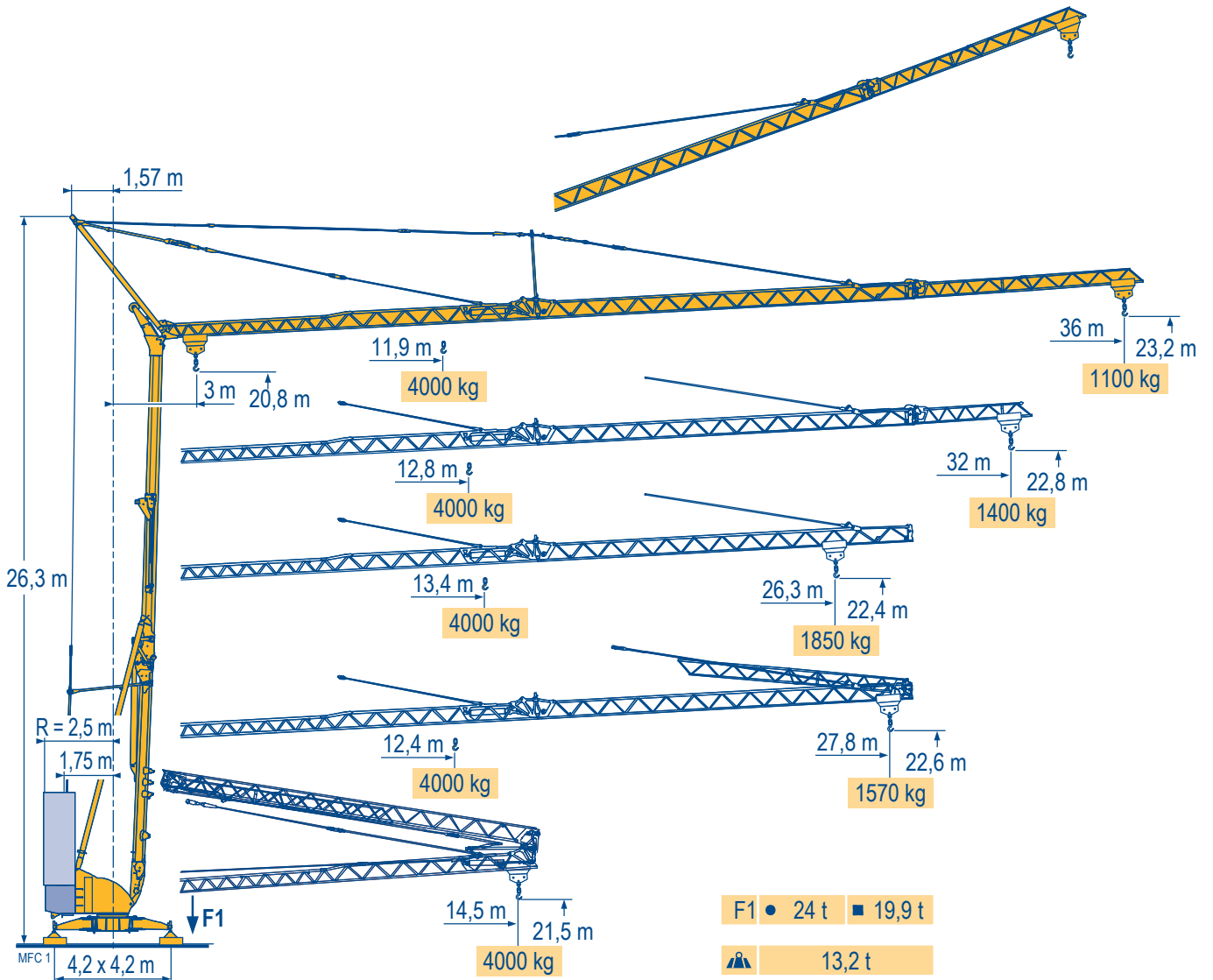


POTAIN

Igo 42

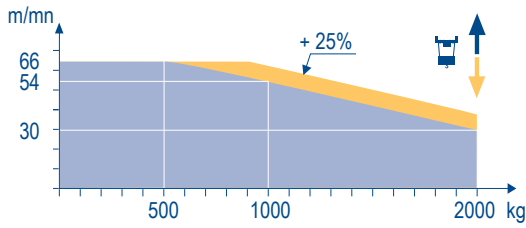


Mécanismes
Antriebe
Mechanisms
Mecanismos
Meccanismi
Mecanismos

MFC 1

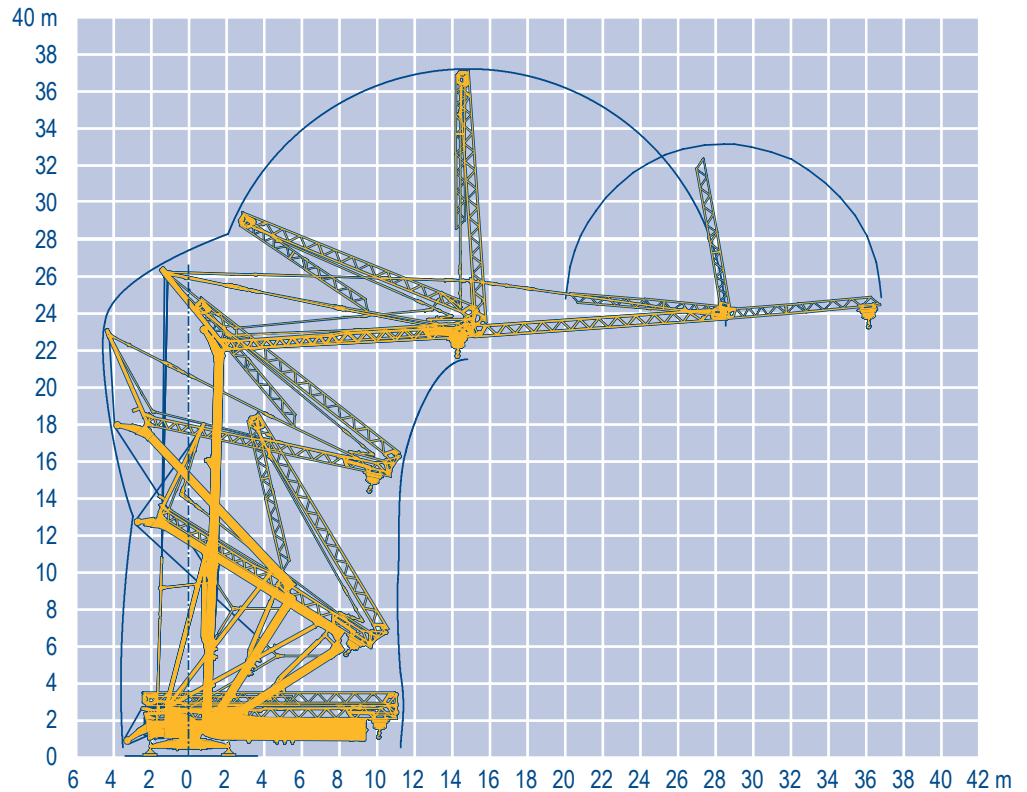
		30					54					66					ch - PS	kW	
▲ ▼	15 LVF 10 Optima	m/min	3,6	18	30	49	66	3,6	18	30	54	66	1,8	8,9	15	27	33	15	11
		kg	2000	2000	2000	1100	500	2000	2000	2000	1000	500	4000	4000	4000	2000	1000		
◀	▶	3 DVF 5	m/min 15 - 30 - 45 (0 → 1000 kg) - 15 - 30 - 41 (1000 → 4000 kg)														3	2,2	
⊙		RVF 41 Optima +	tr/min U/min - rpm 0 → 0,8														4	3	
		CEI 38	IEC 38					kVA											
		400 V (+6% -10%) 50 Hz					15 LVF 10 : 22 kVA												
		480 V (+6% -10%) 60 Hz					15 LVF 10 : 22 kVA												

15 LVF 10 Optima



Montage
Montage
Erection
Montaje
Montaggio
Montagem

MFC 1



Igo 42

POTAIN



F
Levage
Distribution
Orientation

D
Heben
Katzfahren
Schwenken

GB
Hoisting
Trolleying
Slewing

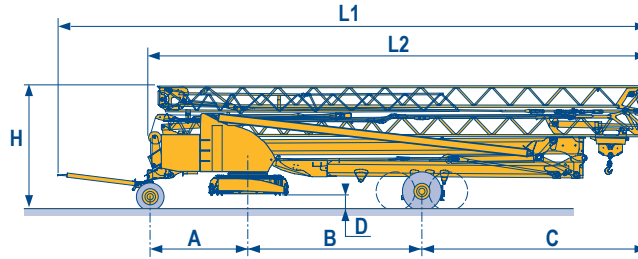
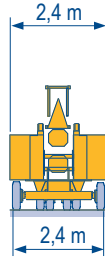
E
Elevación
Distribución
Orientación

I
Sollevamento
Distribuzione
Rotazione

P
Elevação
Distribuição
Rotação

Transport
Transport
Transport
Transporte
Trasporto
Transporte

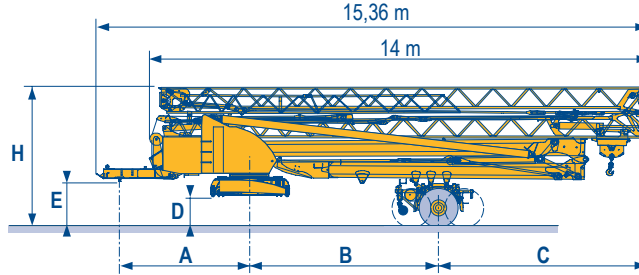
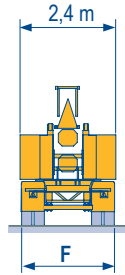
- DJ80/S120 ○
- DJ100/S120 ○
- DJ105/S125
- DJ126M/S125
- DJ126M/S215M



MFC 1

	L1 (m)	L2 (m)	A (m)	B (m)	C (m)	D (m)	H (m)
DJ80/S120	16,4	14	2,75	4,88	6,2	0,36/0,21	3,52/3,37
DJ100/S120	16,4	14	2,75	5,3	5,8	0,36/0,21	3,52/3,37
DJ105/S125	16,4	14	2,75	5,3	5,8	0,36/0,21	3,52/3,37
DJ126M/S125	16,95	14	2,75	5,3	5,8	0,36	3,52
DJ126M/S215M	17,75	14,4	3,55	5	6,1	0,75	4

- SL121/J135
- SL121/S215M
- SL122/J215M



	A (m)	B (m)	C (m)	D (m)	E (m)	H (m)	F (m)
SL121/J135	3,65	5,1	6	0,78	1,3	4	2,45
SL121/S215M	3,65	5	6,17	0,78	1,3	4	2,4
SL122/J215M	3,65	5	6,17	0,78	1,3	4	2,45

F
○ Chantier

D
Baustelle

GB
Site

E
Obra

I
Cantiere

P
Estaleiro



Document commercial non contractuel. Pour toute information technique se référer à la notice correspondante.

Unverbindliches Vertriebsdokument. Für technische Informationen, siehe die entsprechenden Anweisungen.

This commercial document is not legally binding. For any technical information, please refer to the corresponding instructions.

Documento comercial non contractuel. Para cualquier información técnica, ver la noticia correspondiente.

Documento commerciale non vincolante, per tutte le informazioni tecniche fare riferimento al catalogo istruzioni.

Documento comercial não contratual. Para qualquer informação técnica complementar consultar as respectivas instruções.



18, rue de Charbonnières - B.R.173
69132 ECULLY Cedex - France

Tel. : +33 (0) 4 72 18 20 20
Fax. : +33 (0) 4 72 18 20 00
www.manitowoccrane.com

Americas
Tel : +1 888 479 7278
Tel : +1 717 593 2000

Europe - Middle East - Africa
Tel : +33 (0) 4 72 81 50 00
Tel : +44 (0) 191 522 2000

Asia - Pacific
Tel : +65 6264 1188
Fax : +65 6862 4040

www.manitowoccrane.com

Igo 42
Réf. 2008 03 MFC 1

Copyright.Reproduction interdite © POTAIN 2008

Réalisation Sedoc