

- ◼ SK1700 - 1.70x1.70 m
- SN2050 - 2.05x2.05 m

H=Altezza sotto gancio
 H=Height under hook
 H=Hauteur sous crochet



Torre/Reazioni | Masts/Reactions | Mat/Réactions | Maste/Eckdrücke | Mástil/Reacciones | Tramo/Reações

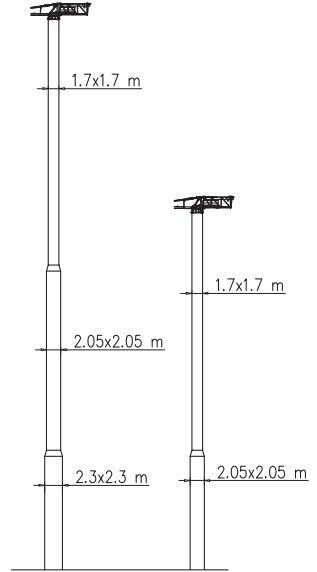
SK1700

33 m → 58 m

		Torre/Masts/Mat/Maste/Mástil/Tramo													
	H[m]	4f/4f BF117	4f/4f BF052	4f/4f BF039	4f/2f SB117	4f/2f SB052	4f/2f SB039	2f/2f ST117	2f/2f ST052	2f/2f ST039	2f/2f STB117	2f/2f STB039	2f/2f RA039	4f/2f SBB039	4f/2f SBB117
TRO 	52	1	1		1			2							
	55.9	2			1			1	1	1					
TTD 	46.8	1			1			2							
	35.1							3							
	55.9	2			1			1	1	1					
	59.8		4									7	1	1	
	50.7											6	1		1

		Torre/Masts/Mat/Maste/Mástil/Tramo													
	H[m]	4f/4f BF117	4f/4f BF052	4f/4f BF039	4f/2f SB117	4f/2f SB052	4f/2f SB039	2f/2f ST117	2f/2f ST052	2f/2f ST039	2f/2f STB117	2f/2f STB039	2f/2f RA039	4f/2f SBB039	4f/2f SBB117
CAF 	55.8	1			1			2		1					
	50.7							4		1					
	59.8	1			1			2		2					
	40.3							3							
	57.2		3			1			6						
*	40.3											7	1	1	
*	59.8											12	1	1	
*	59.8	1										7	1		1

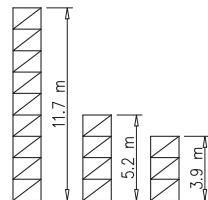
		Torre/Masts/Mat/Maste/Mástil/Tramo													
	H[m]	4f/4f BF117	4f/4f BF052	4f/4f BF039	4f/2f SB117	4f/2f SB052	4f/2f SB039	2f/2f ST117	2f/2f ST052	2f/2f ST039	2f/2f STB117	2f/2f STB039	2f/2f RA039	4f/2f SBB039	4f/2f SBB117
CATR 	52							4							
	52								9						
CATC 	40.3							3		1					
	45.5							3							
	33.8	1	1		1										
*	52	1									5		1		1
*	52										8		1		1
*	50.7										11		1		



	H=0-45 m	H=46-60 m
R1	89 t	106 t
R2	88 t	106 t
R3	74 t	95 t
M	194 tm	336 tm

Peso zavorra | Ballast weight | Poids du lest | Ballastgewicht | Peso de lastre

	H	Tot.
	0-35 m	60800 kg
	36-45 m	72000 kg
	46-60 m	116750 kg



Torre/Reazioni | Masts/Reactions | Mat/Réactions | Maste/Eckdrücke | Mástil/Reacciones | Tramo/Reações

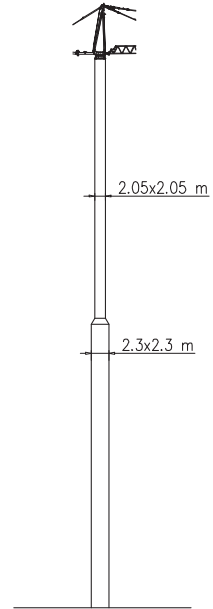
SN2050

33 m → 58 m

		Torre/Masts/Mat/Maste/Mástil/Tramo													
	H[m]	4f/4f BF117	4f/4f BF052	4f/4f BF039	4f/2f SB117	4f/2f SB052	4f/2f SB039	2f/2f ST117	2f/2f ST052	2f/2f ST039	2f/2f STB117	2f/2f STB039	2f/2f RA039	4f/2f SBB039	4f/2f SBB117
TRO 	62.4	2			1			2		1					
	61.1	1	1		1			2	1	1					
TTD 	61.1		4			1			6	1					
	46.8							4							
	52	1	1		1			2							
	62.4		3									10	1	1	
	62.4	1										9	1		1
	62.4	1										11	1	1	

		Torre/Masts/Mat/Maste/Mástil/Tramo													
	H[m]	4f/4f BF117	4f/4f BF052	4f/4f BF039	4f/2f SB117	4f/2f SB052	4f/2f SB039	2f/2f ST117	2f/2f ST052	2f/2f ST039	2f/2f STB117	2f/2f STB039	2f/2f RA039	4f/2f SBB039	4f/2f SBB117
CAF 	63.7	1			1			3							
	67.6	2						2							
	67.6		4						7						
	50.7	1			1	1		3							
	52				1				3						
*	65		3			1						9	1		
*	63.7	1										8	1		1
*	65.3	1				1						10	1		

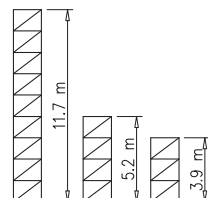
		Torre/Masts/Mat/Maste/Mástil/Tramo													
	H[m]	4f/4f BF117	4f/4f BF052	4f/4f BF039	4f/2f SB117	4f/2f SB052	4f/2f SB039	2f/2f ST117	2f/2f ST052	2f/2f ST039	2f/2f STB117	2f/2f STB039	2f/2f RA039	4f/2f SBB039	4f/2f SBB117
CATR 	59.8	1			1			2		2					
	59.8		3			1			5	2					
CATC 	45.5					1		3							
	49.4		1				1			9					
	32.5				1			1		1					
*	59.8		3									8	1	1	
*	59.8	1										9	1	1	
*	59.8	1										7	1		1



	H=0-45 m	H=46-68 m
R1	125 t	R1 140 t
R2	130 t	R2 144 t
R3	95 t	R3 103 t
M	486 tm	M 570 tm

Peso zavorra | Ballast weight | Poids du lest | Ballastgewicht | Peso de lastre

	H	Tot.
	0-55 m	102320 kg
	56-68 m	112460 kg



Curve di carico | Courbes de charges | Load diagrams | LastKurven | Curvas de cargas

P_{max} 5000 kg

	22000 kg	58 m	3.5	19	20	24	28	30	32	34	36	38	40	42	44	46	48	50	52	54	56	58	m
			5000	5000	4630	3780	3180	2940	2720	2540	2370	2220	2090	1970	1860	1760	1670	1580	1500	1430	1360	1300	kg
	22000 kg	55 m	3.5		21	24	28	30	32	34	36	38	40	42	44	46	48	50	52	54	55	m	
			5000		5000	4250	3580	3310	3080	2870	2680	2520	2370	2240	2110	2000	1900	1810	1720	1640	1600	kg	
	19560 kg	50 m	3.5			24	28	30	32	34	36	38	40	42	44	46	48	50	m				
			5000			5000	4280	3970	3690	3450	3230	3040	2860	2710	2560	2430	2310	2200	kg				
	17115 kg	44 m	3.5			23	24	28	30	32	34	36	38	40	42	44	m						
			5000			5000	4960	4190	3880	3610	3370	3160	2970	2800	2640	2500	kg						

P_{max} 10000/5000 kg

	22000 kg	58 m	3.5	11	12	16	20	24	28	30	32	34	36	38	40	42	44	46	48	50	52	54	56	58	m
			10000	10000	8300	5900	4630	3780	3180	2940	2720	2540	2370	2220	2090	1970	1860	1760	1670	1580	1500	1430	1360	1300	kg
	22000 kg	55 m	3.5		12	16	20	24	28	30	32	34	36	38	40	42	44	46	48	50	52	54	55	m	
			10000		10000	6600	5190	4250	3580	3310	3080	2870	2680	2520	2370	2240	2110	2000	1900	1810	1720	1640	1600	kg	
	19560 kg	50 m	3.5			14	16	20	24	28	30	32	34	36	38	40	42	44	46	48	50	m			
			10000			10000	8000	6180	5070	4280	3970	3690	3450	3230	3040	2860	2710	2560	2430	2310	2200	kg			
	17115 kg	44 m	3.5			14	16	20	24	28	30	32	34	36	38	40	42	44	m						
			10000			10000	8000	6040	4960	4190	3880	3610	3370	3160	2970	2800	2640	2500	kg						

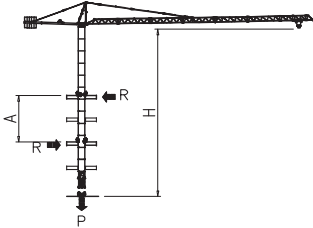
Pesi e ingombri | Packing list | Liste de colisage | Gewicht und abmessungen

Denominazione Description	Disegno Draw	Pezzi Pieces	Dimensioni-Dimensions (mm)			Peso-Weight (kg)		
			L	W	H	Unit	Total	
Elemento di braccio Jib element Élément de èche Elemento de flecha	n°1	1	5750	1400	1490	810	-	
	n°2	1	5860	1400	1470	790	-	
	n°3	1	5860	1400	1470	835	-	
	n°4	1	5860	1400	1470	670	-	
	n°5	1	5860	1400	1470	680	-	
	n°6	1	5850	1400	1470	750	-	
	n°7	1	5820	1400	1470	575	-	
	n°8	1	5820	1400	1470	520	-	
	n°9	1	5740	1400	1450	415	-	
	n°10	1	2940	1400	1450	250	-	
	n°11	1	5770	1400	1450	450	-	
Tirante completo Complete tie rod Tirant complète Tirante completo		9	6500	200	200	240	2160	
Cuspide Cusp Pointe Cúspide		1	6800	1500	1000	1550	-	
Contorbraccio completo Complete counterjib Contrefleche complète Contraflecha completa		1	8500	1650	600	1350	-	
Gruppo girevole Slewing group Table tournante Grupo giratorio		SK1700	1	5100	1810	1400	4100	-
		SN2050	1	5100	1810	1400	4300	-
Carrello Trolley Chariot Carretilla		1	1900	1620	1000	400	-	
Ballatoio con cabina Access balcony with cabin Porte cabine Balcón corrido con cabina		1	2500	2150	2450	1000	-	
Blocchi contrappeso Counterweight block Contre-poids Bloques de contrapeso	VX24	9	1100	280	3400	2445	22000	
Elemento di base Base element Mat de base Elemento de base		SK1700	1	5200	2060	2060	3650	-
		SN2050	1	5200	2260	2260	4040	-

Pesi e ingombri | Packing list | Liste de colisage | Gewicht und abmessungen

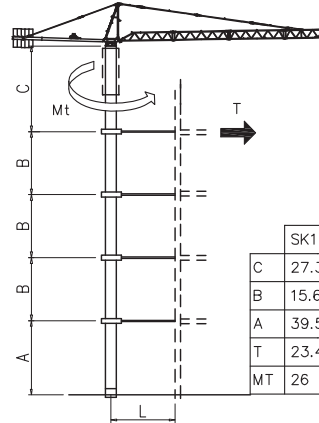
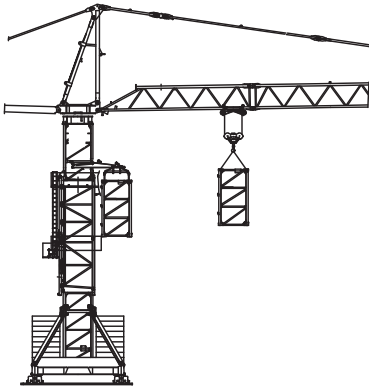
Denominazione Description	Disegno Draw	Pezzi Pieces	Dimensioni-Dimensions (mm)			Peso-Weight (kg)		
			L	W	H	Unit	Total	
Elemento di torre Mast element Elément de mât Elemento de torre	ST039	SK1700	—	3900	1785	1785	1750	—
		SN2050	—	3900	2110	2110	2320	—
	ST052	SK1700	—	5200	1785	1785	2250	—
		SN2050	—	5200	2110	2110	2850	—
	ST117	SK1700	—	11700	1785	1785	4690	—
		SN2050	—	11700	2110	2110	5790	—
	SB039	SK1700	—	3900	1785	1785	2100	—
		SN2050	—	3900	2110	2110	2710	—
	SB052	SK1700	—	5200	1785	1785	2600	—
		SN2050	—	5200	2110	2110	3350	—
	SB117	SK1700	—	11700	1785	1785	4830	—
		SN2050	—	11700	2110	2110	7000	—
BF039	SK1700	—	3900	1785	1785	2450	—	
	SN2050	—	3900	2110	2110	3370	—	
BF052	SK1700	—	5200	1785	1785	3390	—	
	SN2050	—	5200	2110	2110	3880	—	
BF117	SK1700	—	11700	1785	1785	6920	—	
	SN2050	—	11700	2110	2110	8180	—	
Carro di base Base carriage Chassis de base Cruceta de base		4,5x4,5	1	6670	670	780	2040	2040
		5x5	1	7550	670	780	2300	2300
		6x6	1	8870	670	780	2500	2500
		4,5x4,5	2	3180	420	780	980	1960
		5x5	2	3530	420	780	1060	2120
		6x6	2	4320	420	780	1200	2400
Puntoni di base Rafters Jambes de force Cabrios de base		4,5x4,5	4	4070	240	300	270	1080
		5x5	4	4250	240	300	280	1120
		6x6	4	4560	420	300	420	1680
Elemento a perdere Disposable frame Chassis a perdre Bastidor desechable		SK1700	1	1840	1910	1910	1430	—
		SN2050	1	2600	2260	2260	2030	—
Elemento recuperabile Recoverable frame Chassis récupérable Bastidor recuperable		SK1700	1	1300	2170	2170	1720	—
		SN2050	1	1300	2620	2620	1860	—
Bogie di traslazione Driven bogie Boggie motorisèe Balancin de traslaciòn		4	1160	700	600	700	2800	
Blocco zavorra di base Base ballast block Lest de base Bloque de lastre		4,5x4,5	2	5000	750	600	5175	10350
		5x5	2	5300	1000	600	7300	14600
		6x6	2	6400	1200	600	10600	21200
		4,5x4,5	—	3600	1450	300	2800	—
		5x5	—	4100	1600	300	3500	—
		6x6	—	4800	2000	300	5070	—
Corsoio di montaggio Climbing cage Cage de montage Jaula de montaje		SK1700	1	8300	2600	2500	6000	—
		SN2050	1	8300	2900	2700	6700	—

Gru in cavedio | Télescopage sur dalles | Climbing crane | Kletterkrane im Gebäude



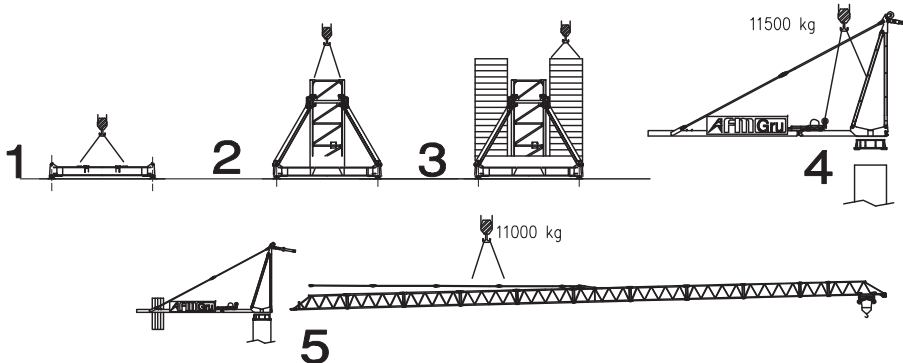
SN2050	H (m)	A (m)	R (t)	P (t)
	9	45.3		
	10	42		
	11	39.3		
	12	37		
	13	35		
	14	33.4		
	15	32		
	16	30.7		
	17	29.6		
	18	28.6		
	19	27.8		
20	27			
Apertura passaggio gru Opening for crane passing 				

Sopralzo idraulico | Telescopic | External climbing | Kletterkrane


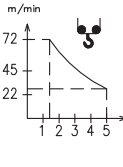
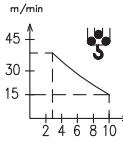
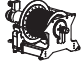


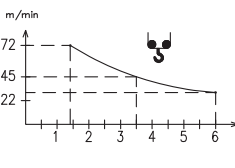



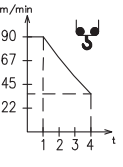
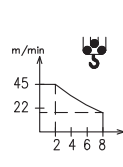
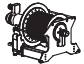









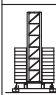
	SK1700	SN2050
C	27.3 m	31.2 m
B	15.6 m	19.5 m
A	39.5 m	50 m
T	23.4 m	27.5 m
MT	26 t xm	26 t xm

Montaggio | Montage | Erection | Montage | Montaje | Montagem



Meccanismi | Mechanisms | Mécanismes | Antriebe | Mecanismos

Sollevamento V45.60 Hoisting Levage Heben Elevaci3n Eleva7ao									 V45.60 33 kW 57 kVA 270 m 500 m (L)
	m/min	3	14	30	45	60			
	t	5	5	5	3.5	2.4	1.4		
									
Sollevamento V45.60 Hoisting Levage Heben Elevaci3n Eleva7ao								 V45.60 33 kW 57 kVA 270 m 500 m (L)	
	m/min	3	14	30	45	60			72
	t	6	6	6	3.5	2.4	1.4		
									
Sollevamento V45.90 Hoisting Levage Heben Elevaci3n Eleva7ao									 V45.90 33 kW 57 kVA 340 m 700 m (L)
	m/min	4	18	36	56	74			
	t	4	4	4	3	2	1		
									
m/min	2	9	18	28	37	45			
	t	8	8	8	6	4			

Carrello Trolleying Distribution Katzfahren Distribuci3n Distribui7ao			0 → 85	m/min	3.6 kW	Potenza elettrica necessaria Puissance électrique nécessaire Necessary electric power Anschlusswert Potencia
Rotazione Slewing Orientation Schwenken Orientaci3n Rota7ao			0 → 0,9	giri/min tr/min rp/min	4.4 kW @ 1200rpm n° 2 x 2.2 kW	
Traslazione Travelling Translation Kranfahren Traslaci3n Transla7ao			0 → 20	m/min	7.5 kW	

Rete elettrica | Réseau | Mains supply | Netzstrom | Red | Rede electrica

400 V - 50 Hz